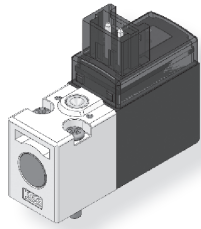


Solenoid Valve  
(3 Port Direct Acting/No Lubrication)

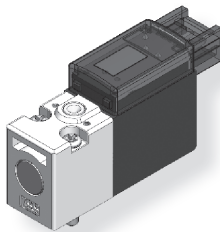
## How to Order

KT 110 - 3 GL - L  

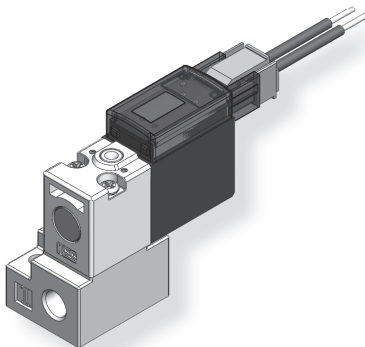
①                      ②                      ③                      ④                      ⑤



KT100-3GL-L



KT100-3GL-M



KT100-3GL-MB

### ① Function

110	N.C	
120	N.O	

### ② Voltage

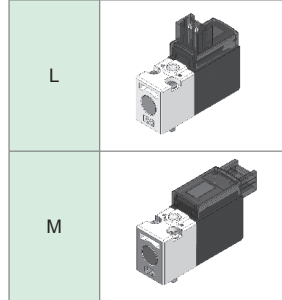
- 1 : AC 100/110V 50/60Hz
- 2 : AC 200/220V 50/60Hz
- 3 : DC 24V
- 4 : DC 12V

\* Custom made of AC24V, AC48V, DC48V, DC100V available.

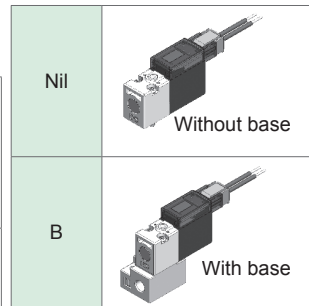
### ③ Electrical entry

GL: Lead wire & lamp

### ④ Direction of electrical entry



### ⑤ Base



Pneumatic Solenoid Valve

## Specifications

Type	KT110	KT120
Fluid	Air, Inert gas	
Effective sectional area Smm <sup>2</sup> (Cv)	1→2	0.28 (0.016)
	2→3	0.36 (0.020)
Operating pressure	0~7kgf/cm <sup>2</sup> (0~0.7MPa)	0~6kgf/cm <sup>2</sup> (0~0.6MPa)
Max. operating frequency	20 cycle/sec	
Response time (at 0.5MPa)	≤ 5ms	
Lubrication	Not required	
Manual override	Non-locking push type (Standard)	
Power consumption	DC	1.0W (42mA)
Allowable voltage	±10% rated voltage	
Ambient & fluid temperature	-5℃~50℃ (No freezing)	
Coil insulation	Class B	
Impact/Vibration resistance	150/30 m/s <sup>2</sup>	
Protection structure	Dust proof	
Weight	12.5g	

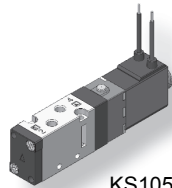
- Excellent durability with its non-lubricated type.
- Minimized installing area with its small size.
- Perfect for controlling system by PLC or computer with its low consuming current type.

# KS105/210/320/530/640 series PNEUMATIC SOLENOID VALVE

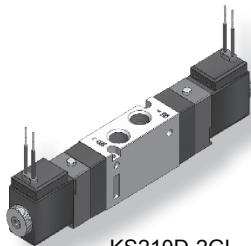
## Solenoid Valve (5 Port Pilot/No Lubrication)



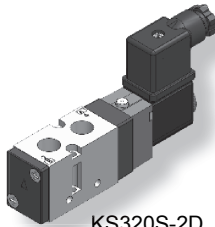
R-mark certification (Reliability certification): KIMM (Korea Institute of Machinery & Materials) certified that the product always keeps the same quality and performance as it has in the beginning under given environmental conditions.



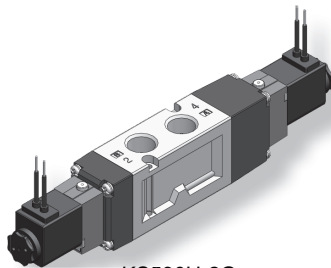
KS105S-2G



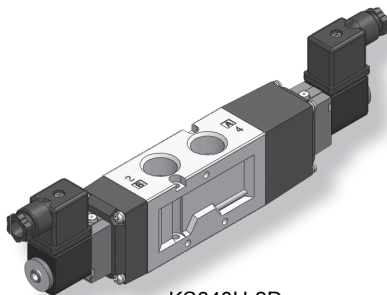
KS210D-2GL



KS320S-2D



KS530H-2G



KS640H-2D

- Excellent durability with its non-lubricated type.
- Minimized installing area with its small size.
- Perfect for controlling system by PLC or computer with its low consuming current type.

## How to Order

KS    320 S - 1 GL -   

①                    ②                    ③                    ④                    ⑤                    ⑥

### ① Port type

Nil : Rc(PT) (Standard)  
G : G

### ② Series

105 : M5  
210 : 1/8  
320 : 1/4  
530 : 3/8  
640 : 1/2

### ③ Function

S	Single solenoid	
D	Double solenoid	
H	Closed center	
I	Pressure center	
J	Exhaust center	

### ④ Voltage

1 : AC 100/110V 50/60Hz  
2 : AC 200/220V 50/60Hz  
3 : DC 24V  
4 : DC 12V

※ Custom made of AC24V, AC48V, DC48V, DC100V available.

### ⑥ Manual override

Nil : Non-locking push type (Standard)  
L : Locking type



### ⑤ Electrical entry

GL	GLS	G	D	Z	M
Lead wire & lamp	Lead wire, lamp & surge suppressor	Lead wire	DIN coil & DIN connector	DIN coil, connector, lamp & surge suppressor	DIN coil & metal DIN connector
GU	GP	DEXT4			
Vertical plug connector	Horizontal plug connector	Level of explosion-proof II 2G EEx m II T4 II 2D IP65 T 130°			

※ M, GU, GP and DEXT4 type not available for KS105, KS210 and KS341 series.

## Specifications

Type	S	D	H / I / J	
Fluid	Air, Inert gas			
Port size	M5, Rc(PT)1/8, 1/4, 3/8, 1/2 G1/8, 1/4, 3/8, 1/2			
Effective sectional area Smm <sup>2</sup> (Cv)	KS105 : 3.6 (0.2) KS(G)210 : 12.6 (0.6) KS(G)320 : 19 (1.0) KS(G)530 : 45 (2.5) KS(G)640 : 65 (3.6)		KS105 : Under development KS(G)210 : 9.0 (0.5) KS(G)320 : 14 (0.8) KS(G)530 : 38 (2.1) KS(G)640 : 50 (2.8)	
Operating pressure	1.5~9kgf/cm <sup>2</sup> (0.15~0.9MPa)		2~9kgf/cm <sup>2</sup> (0.2~0.9MPa)	
Max. operating frequency	KS105 : 5 cycle/sec KS(G)210 : 5 cycle/sec KS(G)320 : 5 cycle/sec KS(G)530 : 5 cycle/sec KS(G)640 : 3 cycle/sec		KS105 : Under development KS(G)210 : 3 cycle/sec KS(G)320 : 3 cycle/sec KS(G)530 : 3 cycle/sec KS(G)640 : 2 cycle/sec	
Response time (at 0.5MPa)	KS105 : ≤ 25ms KS(G)210 : ≤ 25ms KS(G)320 : ≤ 30ms KS(G)530 : ≤ 30ms KS(G)640 : ≤ 30ms		KS105 : Under development KS(G)210 : ≤ 35ms KS(G)320 : ≤ 40ms KS(G)530 : ≤ 40ms KS(G)640 : ≤ 40ms	
Lubrication	Not required			
Manual override	Non-locking push type (Standard), Locking type			
Power consumption	DC	KS105 : 2.5W / KS(G)210 : 2.5W KS(G)320 : 2.8W / KS(G)530 : 2.8W KS(G)640 : 2.8W		
	AC	KS105 : 3.8/3.3VA (50/60Hz) / KS(G)210 : 3.5/3.0VA (50/60Hz) KS(G)320 : 4.5/3.6VA (50/60Hz) / KS(G)530 : 4.5/3.6VA (50/60Hz) KS(G)640 : 4.5/3.6VA (50/60Hz)		
Allowable voltage	±10% rated voltage			
Ambient & fluid temperature	5°C ~ 60°C			
Coil insulation	Class F			
Applicable cylinder	KS105 : Ø2.5~Ø40 / KS(G)210 : Ø12~Ø63 KS(G)320 : Ø32~Ø100 / KS(G)530 : Ø32~Ø125 KS(G)640 : Ø50~Ø160			
Weight	KS105	80g	120g	-
	KS(G)210	130g	180g	200g
	KS(G)320	250g	350g	450g
	KS(G)530	430g	490g	530g
	KS(G)640	500g	620g	850g

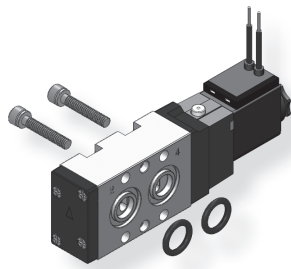
# KS524/534 series(NAMUR) PNEUMATIC SOLENOID VALVE

Solenoid Valve  
(5 Port Pilot/No Lubrication)

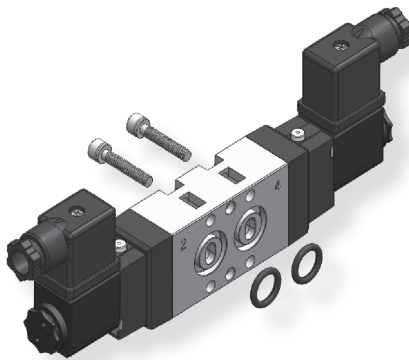
## How to Order

KS    524 S - 2 GL -   

①            ②            ③            ④            ⑤            ⑥



KS524S-2GL



KS534D-2D

### ① Port type

Nil : Rc(PT) (Standard)  
G : G

### ② Series & Port size & Body width

524 : Inlet port : 1/4  
Exhaust port : 1/8  
Body width 24.2mm  
534 : 1/4  
Body width 26.5mm

### ③ Function

S	Single acting	
D	Double acting	

### ④ Voltage

1 : AC 100/110V 50/60Hz  
2 : AC 200/220V 50/60Hz  
3 : DC 24V  
4 : DC 12V

※ Custom made of AC24V, AC48V, DC48V, DC100V available.

### ⑥ Manual override

Nil : Non-locking push type (Standard)  
L : Locking type



### ⑤ Electrical entry

GL	GLS	G	D	Z	M
Lead wire & lamp	Lead wire, lamp & surge suppressor	Lead wire	DIN coil & DIN connector	DIN coil, connector, lamp & surge suppressor	DIN coil & metal DIN connector

GU	GP	DEXT4
Vertical plug connector	Horizontal plug connector	Level of explosion-proof    2G EEx m    T4    2D IP65 T 130°

※ M, GU, GP and DEXT4 type not available for KS105, KS210 and KS341 series.

Pneumatic Solenoid Valve

- Excellent durability with its non-lubricated type.
- Perfect for controlling system by PLC or computer with its low consuming current type.
- Large capacity valve, can be used for large actuator.
- Be used in combination with pneumatic actuator.

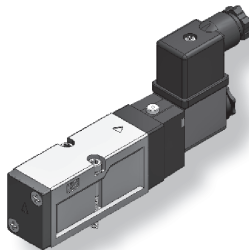
## Specifications

Type	S	D
Fluid	Air, Inert gas	
Port size	Rc(PT) 1/4, G 1/4	
Effective sectional area Smm <sup>2</sup> (Cv)	KS(G)524 : 19 (1.0) KS(G)534 : 31.2 (1.7)	
Operating pressure	1.5~9kgf/cm <sup>2</sup> (0.15~0.9MPa)	
Max. operating frequency	5 cycle/sec	
Response time (at 0.5MPa)	≤ 30ms	
Lubrication	Not required	
Manual override	Non-locking push type (Standard), Locking type	
Power consumption	DC	2.8W
	AC	4.5/3.6VA (50/60Hz)
Allowable voltage	±10% rated voltage	
Ambient & fluid temperature	5°C ~60°C	
Coil insulation	Class F	
Applicable cylinder	KS(G)524 : Ø32~Ø100 KS(G)534 : Ø32~Ø125	
Weight	KS(G)524	224g
	KS(G)534	330g
		316g
		410g

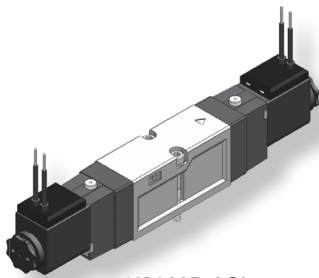
## Solenoid Valve (5 Port Pilot/No Lubrication)



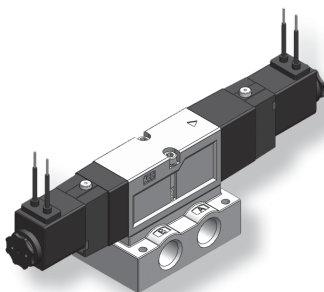
R-mark certification (Reliability certification): KIMM (Korea Institute of Machinery & Materials) certified that the product always keeps the same quality and performance as it has in the beginning under given environmental conditions.



KS328S-2D



KS328D-2GL



KS328H-2G  
With sub Base

- Excellent durability with its non-lubricated type.
- Minimized installing area with its small size.
- Large capacity valve, can be used for large actuator.

## How to Order

KS 328 S - 1 GL -   -  

①                      ②                      ③                      ④                      ⑤

### ① Function

S	Single acting	
D	Double acting	
H	Closed center	
I	Pressure center	
J	Exhaust center	

### ③ Electrical entry

GL	GLS	G	D	Z	M
Lead wire & lamp	Lead wire, lamp & surge suppressor	Lead wire	DIN coil & DIN connector	DIN coil, connector, lamp & surge suppressor	DIN coil & metal DIN connector
GU	GP	DEXT4			
Vertical plug connector	Horizontal plug connector	<div style="border: 1px solid black; padding: 5px; display: inline-block;"> <b>Ex</b>                      Level of explosion-proof                         2G EEx m    T4                         2D IP65 T 130°                 </div>			

\* M, GU, GP and DEXT4 type not available for KS105, KS210 and KS341 series.

### ② Voltage

- 1 : AC 100/110V 50/60Hz
- 2 : AC 200/220V 50/60Hz
- 3 : DC 24V
- 4 : DC 12V

\* Custom made of AC24V, AC48V, DC48V, DC100V available.

### ④ Manual override

- Nil : Non-locking push type (Standard)  
L : Locking type



### ⑤ Option

- Nil : Without Sub Base  
B02 : With sub Base port Rc(PT)1/4  
B03 : With sub Base port Rc(PT)3/8  
G02 : With sub Base port G1/4  
G03 : With sub Base port G3/8

## Specifications

Type	S	D	H / I / J
Fluid	Air, Inert gas		
Port size	Rc(PT) 1/4, 3/8, G 1/4, 3/8		
Effective sectional area Smm <sup>2</sup> (Cv)	19 (1.0)		14 (0.8)
Operating pressure	1.5~9kgf/cm <sup>2</sup> (0.15~0.9MPa)		2~9kgf/cm <sup>2</sup> (0.2~0.9MPa)
Max. operating frequency	5 cycle/sec		3 cycle/sec
Response time (at 0.5MPa)	≤ 30ms		≤ 40ms
Lubrication	Not required		
Manual override	Non-locking push type (Standard), Locking type		
Power consumption	DC	2.8W	
	AC	4.5/3.6VA (50/60Hz)	
Allowable voltage	±10% rated voltage		
Ambient & fluid temperature	5°C ~ 60°C		
Coil insulation	Class F		
Applicable cylinder	Ø32 ~ Ø100		
Weight	400g	500g	600g

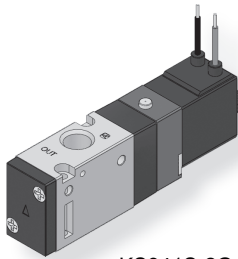


# KS341/342 series

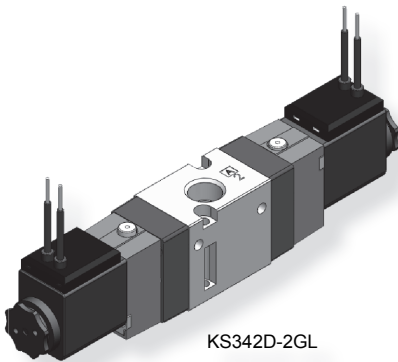
# PNEUMATIC SOLENOID VALVE

Solenoid Valve  
(3 Port Pilot/No Lubrication)

## How to Order



KS341S-2G



KS342D-2GL

- Excellent durability with its non-lubricated type.
- Minimized installing area with its small size.
- Perfect for controlling system by PLC or computer with its low consuming current type.

### ① Port type

Nil : Rc(PT) (Standard)  
G : G

### ② Series

KS(G)341 : 1/8  
KS(G)342 : 1/4

### ③ Function

S	Single acting, N.C	
O	Single acting, N.O	
D	Double acting	

### ④ Voltage

- 1 : AC 100/110V 50/60Hz
- 2 : AC 200/220V 50/60Hz
- 3 : DC 24V
- 4 : DC 12V

※ Custom made of AC24V, AC48V, DC48V, DC100V available.

### ⑥ Manual override

Nil : Non-locking push type (Standard)  
L : Locking type



### ⑤ Electrical entry

GL	GLS	G	D	Z	M
Lead wire & lamp	Lead wire, lamp & surge suppressor	Lead wire	DIN coil & DIN connector	DIN coil, connector, lamp & surge suppressor	DIN coil & metal DIN connector
GU	GP	DEXT4			
Vertical plug connector	Horizontal plug connector	<div style="border: 1px solid black; padding: 5px; display: inline-block;"> <b>Ex</b>                      Level of explosion-proof                         2G EEx m    T4                         2D IP65 T 130°                 </div>			

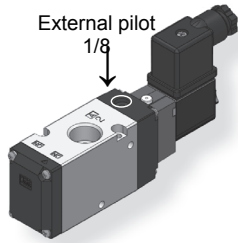
※ M, GU, GP and DEXT4 type not available for KS105, KS210 and KS341 series.

Pneumatic Solenoid Valve

## Specifications

Type	S / O		D
Fluid	Air, Inert gas		
Port size	KS(G)341 : Rc(PT) 1/8, G 1/8 KS(G)342 : Rc(PT) 1/4, G 1/4		
Effective sectional area Smm <sup>2</sup> (Cv)	KS(G)341 : 12.6 (0.6) KS(G)342 : 19 (1.0)		
Operating pressure	1.5~9kgf/cm <sup>2</sup> (0.15~0.9MPa)		
Max. operating frequency	5 cycle/sec		
Response time (at 0.5MPa)	KS(G)341 : ≤ 25ms KS(G)342 : ≤ 30ms		
Lubrication	Not required		
Manual override	Non-locking push type (Standard), Locking type		
Power consumption	DC	KS(G)341 : 2.5W KS(G)342 : 2.8W	
	AC	KS(G)341 : 3.5/3.0VA (50/60Hz) KS(G)342 : 4.5/3.6VA (50/60Hz)	
Allowable voltage	±10% rated voltage		
Ambient & fluid temperature	5 °C ~ 60 °C		
Coil insulation	Class F		
Applicable cylinder	KS(G)341 : Ø12~Ø63 KS(G)342 : Ø32~Ø100		
Weight	KS(G)341	104g	156g
	KS(G)342	230g	320g

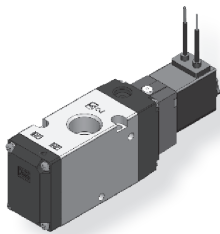
## Solenoid Valve (3 Port Poppet/No Lubrication)



KPS542R-03-2D

Use external pilot type in the following cases.

- For vacuum or for low pressure 0.2MPa or less.
- Consult us for use in a vacuum hold application.
- When having P port downsized in diameter.
- When using A port as the atmospheric releasing port, e.g. air blower



KPS542-03-2GL

- Excellent durability with its non-lubricated type.
- A single valve with 6 valve functions. (Universal porting type)
- As it has the structure of preventing the fixation of a valve, it is resistant to dust and operates perfectly.
- Perfect for controlling system by PLC or computer with its low consuming current type.

## Applications

1. Blow-off valve	2. Pressure release valve	3. Selector valve	4. Valve for vacuum	5. Divider Valve	6. Single-actign cylinder drive	7. Double-actign cylinder drive	8. Double-actign cylinder drive (Exhaust center)

## How to Order

KPS    542    -    03 -    1    GL -   

①                      ②                      ③                      ④                      ⑤                      ⑥

### ① Port type

Nil : Rc(PT) (Standard)  
G : G

### ② Function

Nil	N.C	
O	N.O	
R	External pilot	

### ③ Port size

02 : 1/4  
03 : 3/8(Standard)

### ④ Voltage

1 : AC 100/110V 50/60Hz  
2 : AC 200/220V 50/60Hz  
3 : DC 24V  
4 : DC 12V

※ Custom made of AC24V, AC48V, DC48V, DC100V available.

### ⑥ Manual override

Nil : Non-locking push type (Standard)  
L : Locking type



### ⑤ Electrical entry

GL	GLS	G	D	Z	M
Lead wire & lamp	Lead wire, lamp & surge suppressor	Lead wire	DIN coil & DIN connector	DIN coil, connector, lamp & surge suppressor	DIN coil & metal DIN connector

GU	GP	DEXT4
Vertical plug connector	Horizontal plug connector	Level of explosion-proof    2G EEx m    T4    2D IP65 T 130°

※ M, GU, GP and DEXT4 type not available for KS105, KS210 and KS341 series.

## Specifications

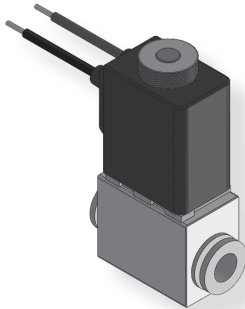
Fluid	Air, Inert gas		
Port size	Rc(PT) 1/4, 3/8, G1/4, 3/8		
Effective sectional area Smm <sup>2</sup> (Cv)	45 (2.4)		
Pilot type	Internal pilot	External pilot	
Operating pressure	2.0~8.0kgf/cm <sup>2</sup> (0.2~0.8MPa)	Supply pressure	-1.0~8.0kgf/cm <sup>2</sup> (-0.1~0.8MPa)
		Pressure of external pilot	Same as operating pressure (Min. 2kgf/cm <sup>2</sup> 0.2MPa)
Max. operating frequency	5 cycle/sec		
Response time (at 0.5MPa)	≤ 30ms		
Lubrication	Not required		
Manual override	Non-locking push type (Standard), Locking type		
Power consumption	DC	2.8W	
	AC	4.5/3.6 VA (50/60Hz)	
Allowable voltage	±10% rated voltage		
Ambient & fluid temperature	5°C~60°C		
Coil insulation	Class F		
Applicable cylinder	ø32~ø125		
Weight	266g		

Solenoid Valve  
(2, 3 Port Direct Acting/One Touch Fitting)

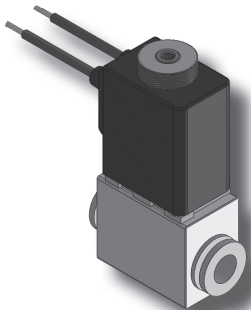
## How to Order

KCAS 2 - C6 - 3 G

①                      ②                      ③                      ④



KCAS2-C6-3G



KCAS3-C6-2G

### ① Function

2	2 Port	
3	3 Port	

### ③ Voltage

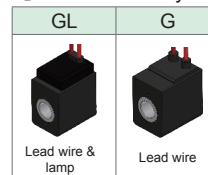
- 1 : AC 100/110V 50/60Hz
- 2 : AC 200/220V 50/60Hz
- 3 : DC 24V
- 4 : DC 12V

※ Custom made of AC24V, AC48V, DC48V, DC100V available.

### ② Port type

- M5 : M5
- 01 : Rc(PT)1/8
- C4 : Ø4 One touch fitting
- C6 : Ø6 One touch fitting (Standard)

### ④ Electrical entry



Pneumatic Solenoid Valve

## Specifications

Type	KCAS 2(2Port)	KCAS 3(3Port)
Fluid	Compressed air, Inert gas	
Port size	M5, Rc(PT) 1/8, Ø4, Ø6 (Standard) One touch fitting	
Orifice	Ø0.6mm (Standard)	
Effective sectional area Smm <sup>2</sup> (Cv)	0.26 (0.014)	
Operating pressure	0~7kgf/cm <sup>2</sup> (0~0.7MPa)	
Max. operating frequency	10 cycle/sec	
Response time (at 5kgf/cm <sup>2</sup> )	≤20ms	
Function	2/2 Way type	3/2 Way type
Seal material	NBR, Viton	
Body material	Aluminium (Standard), Brass	
Power consumption	DC	2.8W
	AC	3.8/3.3VA (50/60Hz)
Allowable voltage	±10% rated voltage	
Ambient & fluid temperature	5℃~60℃	
Coil insulation	Class F	
Weight	58g	

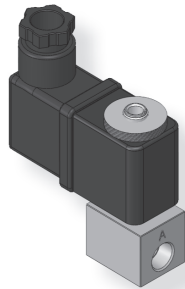
- Direct acting type
- Normally close type
- Burn proof structure, long service life
- High speed response
- Suitable to use with constant delivery machine.
- Custom made of 2Port, 3Port N.O, at 5kgf/cm<sup>2</sup> available.

Solenoid Valve  
(2, 3 Port Direct Acting)

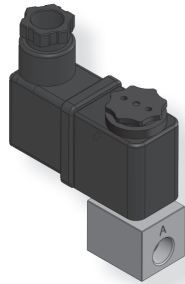
## How to Order

KJAS    2 9 - 2 D    - 02

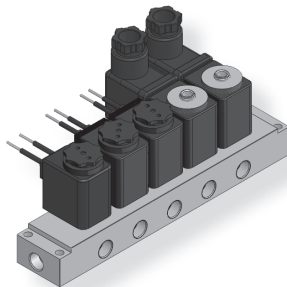
①      ②      ③      -      ④      ⑤      ⑥      -      ⑦



KJAS39-2D



KJAS29-2D



KJAS39-2D-05  
Manifold type

- Direct acting type
- Normally close type
- Burn proof structure, long service life
- High speed response
- Suitable to use with constant delivery machine.
- Easy multi-station adaptation
- Custom made of 2Port, 3Port N.O., at 5kgf/cm<sup>2</sup> available.

### ① Port type

Nil : Rc(PT) (Standard)  
G : G

### ② Function

2	2 Port	
3	3 Port	

### ③ Orifice

9 : Ø1.5 (Standard)  
1 : Ø1

### ④ Voltage

1 : AC 100/110V 50/60Hz  
2 : AC 200/220V 50/60Hz  
3 : DC 24V  
4 : DC 12V

### ⑥ Seal material

Nil : NBR(Standard)  
V : Viton

### ⑦ Number of valve on manifold block

02 : 2 pcs  
03 : 3 pcs  
~  
10 : 10 pcs

\* Custom made of AC24V, AC48V, DC48V, DC100V available.

### ⑤ Electrical entry

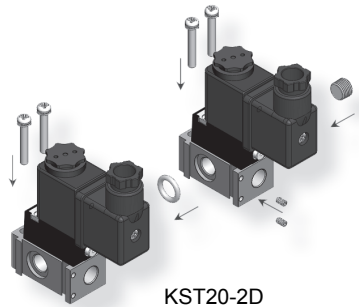
GL	GLS	G	D	Z	M
GU	GP	DEXT4			
		 Level of explosion-proof    2G EEx m    T4    2D IP65 T 130°			

\* M, GU, GP and DEXT4 type not available for KS105, KS210 and KS341 series.

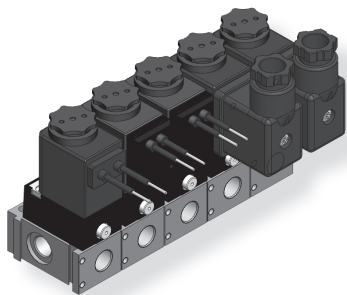
## Specifications

Type	KJAS 29 (2Port)	KJAS 39 (3Port)
Fluid	Air, Water, Oil	
Port size	A, P : Rc(PT) 1/8, R:M5	
Orifice	Ø1.5mm(Standard), Ø1.0mm	
Effective sectional area Smm <sup>2</sup> (Cv)	1.7 (1.0), 0.65(0.04)	
Operating pressure	0~7kgf/cm <sup>2</sup> (0~0.7MPa)	
Max. operating frequency	10 cycle/sec	
Response time (at 0.5MPa)	≤ 20ms	
Function	3/2Way Type, 2/2 Way Type	
Seal material	NBR, Viton	
Body material	Individual type	Brass
	Manifold type	Aluminium
Power consumption	DC	2.8W, 6W
	AC	4.5/3.6VA (50/60Hz)
Allowable voltage	±10% rated voltage	
Ambient & fluid temperature	5°C ~ 60°C	
Coil insulation	Class F	
Weight	140g	

## Solenoid Valve (2, 3 Port Direct Acting)



KST20-2D



KST20-2o-05

- Direct acting type
- Normally close type
- Burn proof structure, long service life
- High speed response
- Suitable to use with constant delivery machine.
- Custom made of 2Port, 3Port N.O., at 5kgf/cm<sup>2</sup> available.
- Easy multi-station adaptation
- Beautiful appearance
- Free mount type
- Manual override is available

### How to Order

KST    2 0 - 2 D -    -   

①            ②            ③            ④            ⑤            ⑥            ⑦

#### ① Port type

Nil : Rc(PT) (Standard)  
G : G

#### ② Function

2	2 Port N.C	
3	3 Port N.C	

#### ③ Seal material

0 : ø0.9 (Standard)

#### ④ Voltage

1 : AC 100/110V 50/60Hz  
2 : AC 200/220V 50/60Hz  
3 : DC 24V  
4 : DC 12V

※ Custom made of AC24V, AC48V, DC48V, DC100V available.

#### ⑥ Seal material

Nil : NBR(Standard)  
V : Viton

#### ⑦ Number of valve on manifold block

02 : 2 pcs  
03 : 3 pcs  
~  
10 : 10 pcs

#### ⑤ Electrical entry

GL	GLS	G	D	Z	M
Lead wire & lamp	Lead wire, lamp & surge suppressor	Lead wire	DIN coil & DIN connector	DIN coil, connector, lamp & surge suppressor	DIN coil & metal DIN connector
GU	GP	DEXT4			
Vertical plug connector	Horizontal plug connector	Level of explosion-proof    2G EEx m    T4    2D IP65 T 130°			

※ M, GU, GP and DEXT4 type not available for KS105, KS210 and KS341 series.

Pneumatic Solenoid Valve

### Specifications

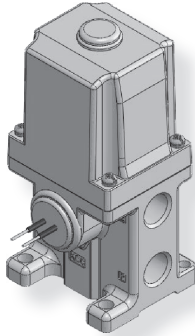
Type	KST20(2Port)	KST30(3Port)
Fluid	Air, Inert gas	
Port size	Rc(PT) 1/8, G 1/8	
Orifice	ø0.9mm (Standard)	
Effective sectional area Smm <sup>2</sup> (Cv)	0.65 (0.04)	
Operating pressure	0~8kgf/cm <sup>2</sup> (0~0.8MPa)	
Max. operating frequency	10 cycle/sec	
Response time (at 0.5MPa)	≤ 20ms	
Function	3/2Way Type, 2/2 Way Type	
Seal material	NBR, Viton	
Body material	Aluminium	
Manual override	Push button(Standard), Lever(Optional)	
Power consumption	DC	2.8W, 6W
	AC	4.5/3.6VA (50/60Hz)
Allowable voltage	±10% rated voltage	
Ambient & fluid temperature	5℃ ~60℃	
Coil insulation	Class F	
Weight	130g	

Solenoid Valve  
(3 Port Direct Acting/Metal Seal)

## How to Order

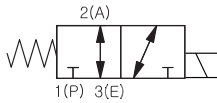
KS    31 3 5 - 04 2 G

①                      ②                      ③                      ④



KS3135-042G

### Symbol



- Direct acting type
- Large capacity valve, can be used for large actuator.
- With dust proof metal sealing, do not need lubrication.
- With balance spool type, neither of the port being supplied with pressure will not affect the valve operation. With balance spool type, neither of the port being supplied with pressure will not affect the valve operation.

① Port type  
Nil : Rc(PT) (Standard)  
G : G

② Body nominal size  
3 : Body size 3/8

③ Port size  
03 : 3/8  
04 : 1/2

④ Voltage  
1 : AC100/110V 50/60Hz  
2 : AC200/220V 50/60Hz

## Specifications

Type	KS 3135 G-type (Flying Lead)	
Fluid	Air, Vacuum, Inert gas	
Port size	Rc(PT) 3/8, 1/2, G 3/8, 1/2	
Effective sectional area Smm <sup>2</sup> (Cv)	Rc(PT) 3/8	37(2.0)
	Rc(PT) 1/2	43(2.4)
Operating pressure	0~10kgf/cm <sup>2</sup> (0~1MPa)	
Max. operating frequency	5 cycle/sec	
Response time (at 0.5kgf/cm <sup>2</sup> )	≤ 30ms	
Lubrication	Not required	
Power consumption	Starting : 100/90VA (50/60Hz)	
	Maintaining : 20/14VA (50/60Hz)	
Allowable voltage	±10% rated voltage	
Ambient temperature	-20℃ ~ 50℃	
Fluid temperature	5℃ ~ 60℃	
Coil insulation	Class B	
Weight	860g	

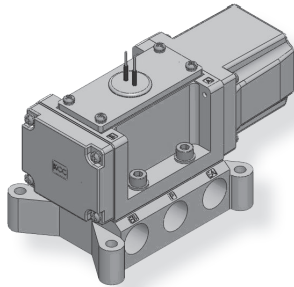


Solenoid Valve  
(5 Port Direct Acting/Metal Seal)

## How to Order

KS    4   1   30 -   04     2   G

①                      ②                      ③                      ④



KS4130-042G

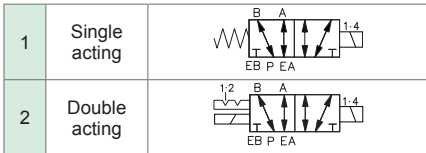
① Port type

Nil : Rc(PT) (Standard)  
G : G

③ Port size

03 : 3/8  
04 : 1/2

② Function

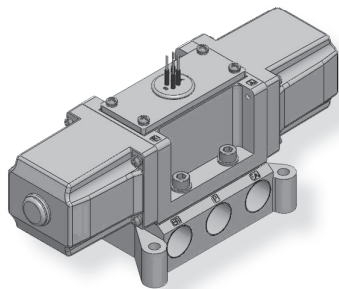


④ Voltage

1 : AC100/110V 50/60Hz  
2 : AC200/220V 50/60Hz

\* In case of ISO standard notation, 1:P, 2:B, 3:EB, 4:A, 5:EA.

Pneumatic Solenoid Valve



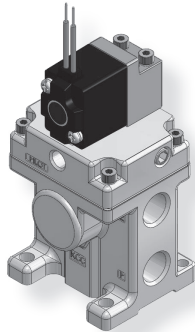
KS4230-042G

## Specifications

Type	KS4130	KS4230
Fluid	Air, Vacuum, Inert gas	
Port size	Rc(PT) 3/8, 1/2, G 3/8, 1/2	
Effective sectional area Smm <sup>2</sup> (Cv)	Rc(PT) 3/8	43 (2.4)
	Rc(PT) 1/2	49 (2.72)
Operating pressure	0~10kgf/cm <sup>2</sup> (0~1MPa)	
Max. operating frequency	5 cycle/sec	3 cycle/sec
Response time (at 5kgf/cm <sup>2</sup> )	≤ 30ms	
Lubrication	Not required	
Power consumption	Starting : 100/90VA (50/60Hz)	
	Maintaining : 20/14VA (50/60Hz)	
Allowable voltage	±10% rated voltage	
Ambient temperature	-20℃ ~ 50℃	
Fluid temperature	5℃ ~ 60℃	
Coil insulation	Class B	
Weight	1440g	1830g

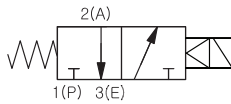
- Direct acting type
- Large capacity valve, can be used for large actuator.
- With dust proof metal sealing, do not need lubrication.
- With balance spool type, neither of the port being supplied with pressure will not affect the valve operation.

Solenoid Valve  
(3 Port Pilot/Metal Seal)



KSP3135-03G

Symbol



- Pilot type
- Large capacity valve, can be used for large actuator.
- With dust proof metal sealing, do not need lubrication.

## How to Order

KSP    3135    - 03 1 G

①                      ②                      ③                      ④

① Port type

Nil : Rc(PT) (Standard)  
G : G

② Function

Nil : Internal Pilot  
R : External Pilot

③ Port size

03 : 3/8  
04 : 1/2

④ Voltage

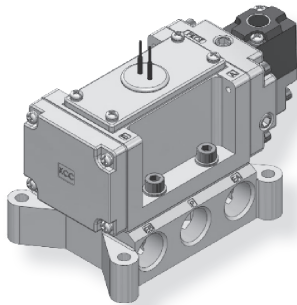
1 : AC 100/110V 50/60Hz  
2 : AC 200/220V 50/60Hz  
3 : DC 24V  
4 : DC 12V

\* Custom made of AC24V, AC48V, DC48V, DC100V available.

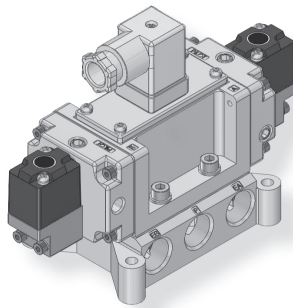
## Specifications

Fluid	Air, Vacuum, Inert gas	
Port size	Rc(PT) 3/8, 1/2, G 3/8, 1/2	
Effective sectional area Smm <sup>2</sup> (Cv)	Rc(PT) 3/8, G 3/8	33(1.8)
	Rc(PT) 1/2, G 1/2	43(2.4)
Operating pressure	1.5~10kgf/cm <sup>2</sup> (0.15~1MPa)	
Max. operating frequency	DC	3 cycle/sec
	AC	5 cycle/sec
Response time (at 0.5MPa)	DC	≤ 60ms
	AC	≤ 30ms
Lubrication	Not required	
Manual override	Push button	
Power consumption	DC	4.6W
	AC	13/10VA (50/60Hz)
Allowable voltage	±10% rated voltage	
Ambient temperature	-10℃ ~ 50℃	
Fluid temperature	5℃ ~ 60℃	
Coil insulation	Class F	
Weight	650g	

Solenoid Valve  
(5 Port Pilot/Metal Seal)



KSP4130-031G



KSP4230-031D

- Pilot type
- Large capacity valve, can be used for large actuator.
- With dust proof metal sealing, do not need lubrication.

## How to Order

KSP    4    1    30    -    03    1    G

①                      ②                      ③                      ④                      ⑤                      ⑥

① Port type

Nil : Rc(PT) (Standard)  
G : G

③ Function

Nil : Internal Pilot  
R : External Pilot

⑤ Voltage

1 : AC 100/110V 50/60Hz  
2 : AC 200/220V 50/60Hz  
3 : DC 24V  
4 : DC 12V

② Function

1	Single acting (S)	
2	Double acting (D)	

④ Port size

03 : 3/8  
04 : 1/2

⑥ Port size

03 : 3/8  
04 : 1/2

※ Custom made of AC24V, AC48V, DC48V, DC100V available.

※ In case of ISO standard notation, 1:P, 2:B, 3:EB, 4:A, 5:EA.

## Specifications

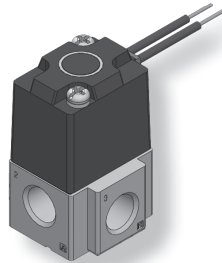
Type	Single	Double
Fluid	Air, Vacuum, Inert gas	
Port size	Rc(PT) 3/8, 1/2, G 3/8, 1/2	
Effective sectional area Smm <sup>2</sup> (Cv)	43(2.39)	
	49(2.72)	
Operating pressure	1.5~10kgf/cm <sup>2</sup> (0.15~1MPa)	
Max. operating frequency	DC	3 cycle/sec
	AC	5 cycle/sec                      3 cycle/sec
Response time (at 0.5MPa)	DC	≤ 60ms
	AC	≤ 30ms
Lubrication	No required	
Power consumption	DC	4.6W
	AC	13/10VA (50/60Hz)
Manual override	Push button	
Allowable voltage	±10% rated voltage	
Ambient temperature	-10℃ ~ 50℃	
Fluid temperature	5℃ ~ 60℃	
Coil insulation	Class F	
Weight	1280g	1600g

# KT307 series

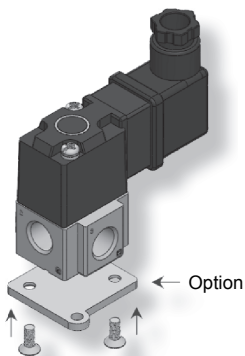
# PNEUMATIC SOLENOID VALVE

Solenoid Valve  
(3 Port Poppet/Universal Port Type)

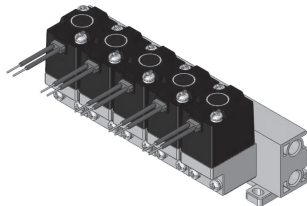
## How to Order



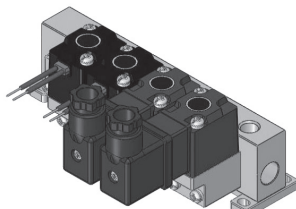
KT307 G-TYPE  
(Standard)



KT307-022D (Under development)



Individual exhaust



Common exhaust

- A single valve with 6 valve functions.  
(Universal porting type)
- High frequency continuous operation available.  
(Max.10C/S)
- As it has the structure of preventing the fixation  
of a valve, it is resistant to dust and operates  
perfectly.
- Burn proof structure, long service life

### ① Type

T : Direct piping type  
O : Manifold type

### ② Port type

Nil : Rc(PT) (Standard)  
G : G

### ③ Function

Function	Symbol	Function	Symbol
Nil	Air	Vacuum+Air 1Port-Vacuum 3Port-Air	
	Vacuum	Air + Vacuum 1Port-Air 3Port-Vacuum	

### ④ Port size

01 : 1/8  
02 : 1/4

### ⑤ Voltage

1 : AC 100/110V 50/60Hz  
2 : AC 200/220V 50/60Hz  
3 : DC 24V  
4 : DC 12V

### ⑥ Electrical entry

G : Lead wire ≥ 300mm  
(Standard)

※ Contact us for longer lead wire.

### ⑦ Option

Nil : Without bracket  
B : With bracket

### ⑧ Number of valve on manifold block

02 : 2 pcs  
03 : 3 pcs  
~  
19 : 19 pcs  
20 : 20 pcs

※ Only available for KO Series.

### ⑨ Pilot exhaust type

2 : Common exhaust  
3 : Individual exhaust

※ Only available for KO Series.

## Specifications

Fluid	Air, Vacuum, Inert gas	Manual override	Push button
Port size	Rc(PT) 1/8, 1/4, G1/8, 1/4	Power consumption	DC 4.6W AC 13/10VA (50/60Hz)
Effective sectional area Smm <sup>2</sup> (Cv)	3.2 (0.18)	Allowable voltage	±10% rated voltage
Operating pressure	Air 0~9kgf/cm <sup>2</sup> (0~0.9MPa)	Ambient temperature	-10℃~50℃
	Vacuum 10~760Torr (1kPa~100kPa abs.)	Fluid temperature	5℃~80℃
Max. operating frequency	10 cycle/sec	Coil insulation	Class F
Response time (at 5 kgf/cm <sup>2</sup> )	≤ 20ms	Weight	162g
Lubrication	Not required		

## Applications

Type	3 Port N.C valve	3 Port N.O valve	Divider valve
Solenoid off			
Solenoid on			
Type	2 Port N.C valve	2 Port N.O valve	Selector valve
Solenoid off			
Solenoid on			

# KT317 series

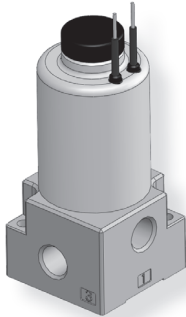
# PNEUMATIC SOLENOID VALVE

Solenoid Valve  
(3 Port Poppet/Universal Port Type)

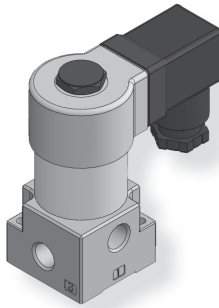
## How to Order

KT    317    -       -   

①                      ②                      ③                      ④                      ⑤



KT317-022-G (Standard)



KT317-022-D

- A single valve with 6 valve functions.  
(Universal porting type)
- High frequency continuous operation available.  
(Max. 10C/S)
- With dust proof metal sealing, do not need  
lubrication.
- Burn proof structure, long service life

### ① Port type

Nil : Rc(PT) (Standard)  
G : G

### ③ Port size

02 : 1/4  
03 : 3/8

### ④ Voltage

1 : AC 100/110V 50/60Hz  
2 : AC 200/220V 50/60Hz  
3 : DC 24V  
4 : DC 12V

\* Custom made of AC24V, AC48V, DC48V, DC100V available.

### ② Function

Function	Symbol	Function	Symbol
Nil	Air	W	Vacuum+Air 1Port-Vacuum 3Port-Air
V	Vacuum	N.C	X
		N.O	

### ⑤ Electrical entry

G : Lead wire ≥ 300mm  
(Standard)  
D : DIN connector  
\* Contact us for longer lead wire.

Pneumatic  
Solenoid Valve

## Specifications

Fluid	Air, Vacuum, Inert gas	Manual override	Push button
Port size	Rc(PT) 1/4, 3/8, G 1/4, 3/8	Power consumption	DC 11W AC 35/29VA (50/60Hz)
Effective sectional area Smm <sup>2</sup> (Cv)	11 (0.6)	Allowable voltage	±10% rated voltage
Operating pressure	Air 0~9kgf/cm <sup>2</sup> (0~0.9MPa)	Ambient temperature	-10℃~50℃
	Vacuum 10~760Torr (1kPa~100kPa abs.)	Fluid temperature	5℃~80℃
Max. operating frequency	10 cycle/sec	Coil insulation	Class F
Response time (at 5kgf/cm <sup>2</sup> )	ON 7ms	Weight	G-TYPE 420g
	OFF 6.5ms		D-TYPE 500g
Lubrication	Not required		

## Applications

Type	3 Port N.C valve	3 Port N.O valve	Divider valve
Solenoid off			
Solenoid on			
Type	2 Port N.C valve	2 Port N.O valve	Selector valve
Solenoid off			
Solenoid on			

# KA(B)V105/210/320/530/640 series PNEUMATIC SOLENOID VALVE

Operated Valve  
(5 Port Pilot/No Lubrication)

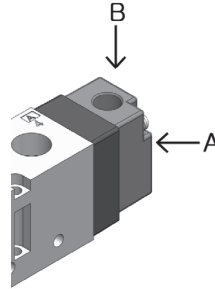
## How to Order

K **A** V **320** **S**

①                      ②                      ③                      ④

### ① Air supply direction

A : Horizontal  
B : Vertical



### ② Port type

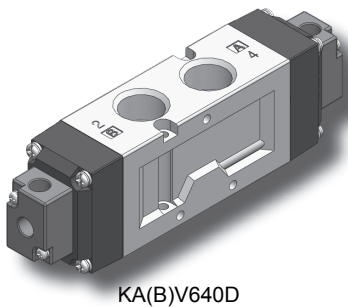
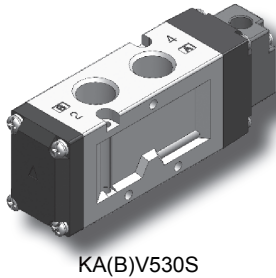
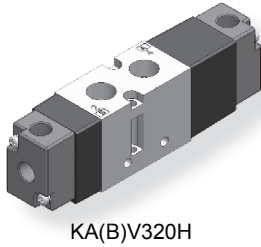
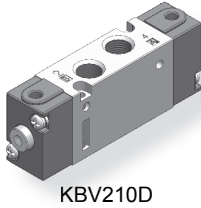
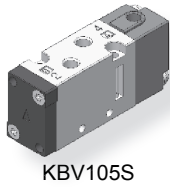
Nil : Rc(PT) (Standard)  
G : G

### ③ Port size

105 : M5  
210 : 1/8  
320 : 1/4  
530 : 3/8  
640 : 1/2

### ④ Function

S	Single acting	
D	Double acting	
H	Closed center	
I	Pressure center	
J	Exhaust center	



## Specifications

Type	S	D	H / I / J	
Fluid	Air, Inert gas			
Port size	M5, Rc(PT)1/8, 1/4, 3/8, 1/2 G1/8, 1/4, 3/8, 1/2			
Pilot port size	KA(B)V(G)105, 210 : M5 KA(B)V(G)320, 530, 640 : Rc(PT) 1/8, G1/8			
Effective sectional area Smm <sup>2</sup> (Cv)	KA(B)V(G)105 : 3.6 (0.2) KA(B)V(G)210 : 12.6 (0.6) KA(B)V(G)320 : 19 (1.0) KA(B)V(G)530 : 45 (2.5) KA(B)V(G)640 : 65 (3.6)		KA(B)V(G)320 : 14 (0.8) KA(B)V(G)530 : 38 (2.1) KA(B)V(G)640 : 50 (2.8)	
Operating pressure	1.5~9kgf/cm <sup>2</sup> (0.15~0.9MPa)		2~9kgf/cm <sup>2</sup> (0.2~0.9MPa)	
Pilot pressure	2~10kgf/cm <sup>2</sup> (0.2~1MPa)			
Max. operating frequency	5 cycle/sec		KA(B)V(G)320 : 3 cycle/sec KA(B)V(G)530 : 3 cycle/sec KA(B)V(G)640 : 3 cycle/sec	
Ambient & fluid temperature	5°C ~ 60°C			
Weight	KA(B)V(G)105	54g	68g	-
	KA(B)V(G)210	100g	120g	-
	KA(B)V(G)320	190g	240g	340g
	KA(B)V(G)530	310g	380g	420g
	KA(B)V(G)640	440g	510g	750g

- Excellent durability with its non-lubricated type.
- (KA(B)V105/210/320) Easy to mount and to maintain with light weight and small size
- Large capacity valve(KA(B)V530/640), suitable for large actuator.
- Fast response with its low pressure pilot
- Easy to install if horizontal type(KAV) or vertical type(KBV) is selected depending on installation direction.

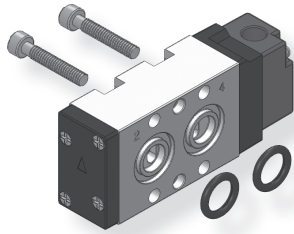


# KA(B)V524/534 series

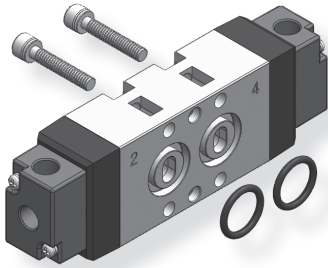
# PNEUMATIC SOLENOID VALVE

Operated Valve  
(5 Port Pilot/No Lubrication)

## How to Order

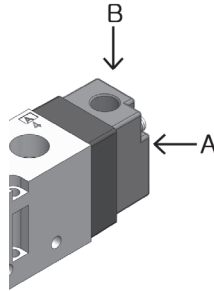


KA(B)V524S



KA(B)V534D

① Air supply direction  
A : Horizontal  
B : Vertical



② Port type  
Nil : Rc(PT) (Standard)  
B : G

③ Port size & Body width  
524 : Inlet port 1/4, Exhaust port 1/8,  
Width 24.2mm  
534 : 1/4, Width 26.5mm

④ Function

S	Single acting	
D	Double acting	

Pneumatic Solenoid Valve

- Excellent durability with its non-lubricated type.
- Large capacity valve, can be used for large actuator.
- Fast response with its low pressure pilot
- Easy to install if horizontal type(KAV) or vertical type(KBV) is selected depending on installation direction.

## Specifications

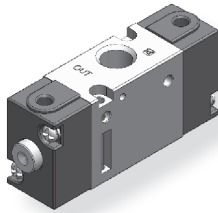
Type	S	D
Fluid	Air, Inert gas	
Port size	Rc(PT) 1/4, G1/4	
Pilot port size	Rc(PT) 1/8, G1/8	
Effective sectional area Smm <sup>2</sup> (Cv)	KA(B)V(G)524 : 19mm <sup>2</sup> (1.0) KA(B)V(G)534 : 35mm <sup>2</sup> (2.0)	
Operating pressure	0.15~0.9MPa (1.5~9kgf/cm <sup>2</sup> )	
Pilot pressure	0.2~1.0MPa (2~10kgf/cm <sup>2</sup> )	
Max. operating frequency	5 cycle/sec	
Ambient & fluid temperature	5°C ~60°C	
Weight	KA(B)V(G)524	192g
	KA(B)V(G)534	270g

# KA(B)V341/342 series

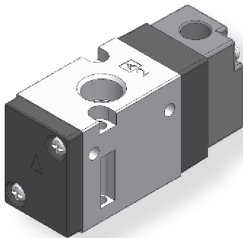
# PNEUMATIC SOLENOID VALVE

Operated Valve  
(3 Port Pilot/No Lubrication)

## How to Order

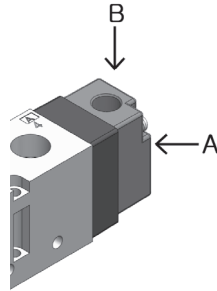


KA(B)V341D



KA(B)V342S

- ① Air supply direction  
A : Horizontal (Standard)  
B : Vertical



- ② Port type  
Nil : Rc(PT) (Standard)  
G : G

- ③ Port size  
341 : 1/8  
342 : 1/4

- ④ Function

Function		Symbol
S	Single acting N.C	
O	Single acting N.O	
D	Double acting	

- Excellent durability with its non-lubricated type.
- Easy to mount and to maintain with light weight and small size
- Fast response with its low pressure pilot
- Easy to install if horizontal type(KAV) or vertical type(KBV) is selected depending on installation direction.

## Specifications

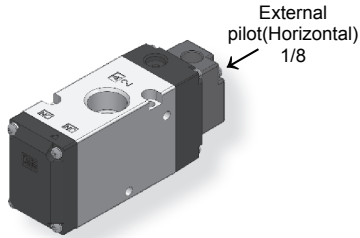
Type	S / O	D
Fluid	Air, Inert gas	
Port size	Rc(PT) 1/8, 1/4 G 1/8, 1/4	
Pilot port size	KA(B)V(G)341 : M5 KA(B)V(G)342 : Rc(PT)1/8, G1/8	
Effective sectional area Smm <sup>2</sup> (Cv)	KA(B)V(G)341 : 12.6 (0.6) KA(B)V(G)342 : 19 (1.0)	
Operating pressure	1.5~9kgf/cm <sup>2</sup> (0.15~0.9MPa)	
Pilot pressure	2~10kgf/cm <sup>2</sup> (0.2~1MPa)	
Max. operating frequency	5 cycle/sec	
Ambient & fluid temperature	5℃ ~60℃	
Weight	KA(B)V(G)341	78g
	KA(B)V(G)342	170g
		102g
		220g

Operated Valve  
(3 Port Poppet/No Lubrication)

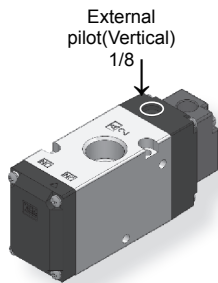
## How to Order

KP **A** **542** **02**

①      ②      ③      ④



KPA542

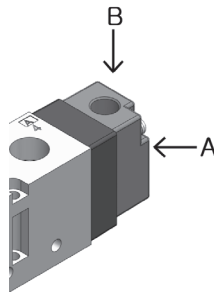


KPB542

### ① Air supply direction

A : Horizontal (Standard)  
B : Vertical

※ Type A is standard while type B is semi standard.



### ② Port type

Nil : Rc(PT) (Standard)  
B : G

### ③ Function

Function	Symbol
Nil (N.C, N.O compatible)	

※ When using external pilot type in vacuum, only KPA type is available

### ④ Port size

02 : 1/4  
03 : 3/8

※ When using external pilot type in vacuum, only KPA type is available

## Specifications

Fluid	Air, Inert gas	
Port size	Rc(PT) 1/4, 3/8, G 1/4, 3/8	
Pilot port size	Rc(PT) 1/8	
Effective sectional area Smm <sup>2</sup> (Cv)	45mm <sup>2</sup> (2.4)	
Operating pressure	Internal Pilot	2.0~8.0kgf/cm <sup>2</sup> (0.2~0.8MPa)
	External Pilot	-1.0~2.0kgf/cm <sup>2</sup> (-0.1~0.2MPa)
Pilot pressure	Identical to operating pressure (Min. 2kgf/cm <sup>2</sup> , 0.2MPa)	
Max. operating frequency	5 cycle/sec	
Ambient & fluid temperature	5℃~60℃	
Weight	290g	

- A single valve with 6 valve functions. (Universal porting type)
- As it has the structure of preventing the fixation of a valve, it is resistant to dust and operates perfectly.
- Possible to use in vacuum

※ Refer to KPS542 series for applications.

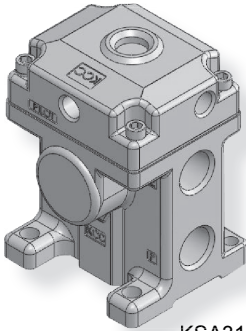
Pneumatic Solenoid Valve

Operated Valve  
(3 Port Direct Acting/Metal Seal)

## How to Order

KSA    31 3 5 - 03

①                      ②                      ③



KSA3135

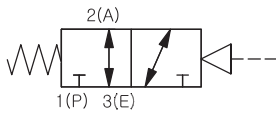
- ① Port type  
Nil : Rc(PT) (Standard)  
G : G
- ② Body nominal size  
3 : Body size 3/8

- ③ Port size  
03 : 3/8  
04 : 1/2

## Specifications

Fluid	Air, Vacuum, Inert gas	
Port size	Rc(PT) 3/8, 1/2, G 3/8, G1/2	
Pilot port size	Rc(PT) 1/8	
Effective sectional area Smm <sup>2</sup> (Cv)	Rc(PT) 3/8	37(2.0)
	Rc(PT) 1/2	43(2.4)
Operating pressure	0~10kgf/cm <sup>2</sup> (0~1MPa)	
Pilot pressure	1~10kgf/cm <sup>2</sup> (0.1~1MPa)	
Max. operating frequency	5 cycle/sec	
Lubrication	Not required	
Manual override	Push button type available (Option)	
Ambient temperature	-20℃ ~ 50℃	
Fluid temperature	5℃ ~ 60℃	
Weight	510g	

### Symbol



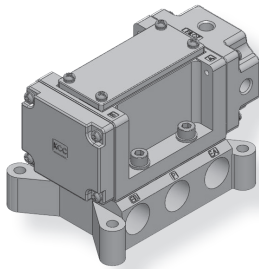
- Direct acting type
- Large capacity valve, can be used for large actuator.
- With dust proof metal sealing, do not need lubrication.

Operated Valve  
(5 Port Direct Acting/Metal Seal)

## How to Order

KSA    4 1 30 - 03

①                      ②                      ③                      ④



KSA4130

① Port type

Nil : Rc(PT) (Standard)  
G : G

③ Body nominal size

30 : Body size 3/8

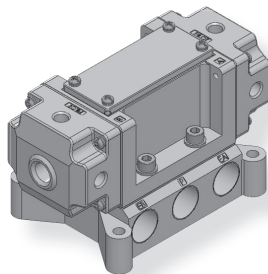
② Function

Function	Symbol
1 Single acting(S)	
2 Double acting (D)	

④ Port size

03 : 3/8  
04 : 1/2

\* In case of ISO standard notation, 1:P, 2:B, 3:EB, 4:A, 5:EA.



KSA4230

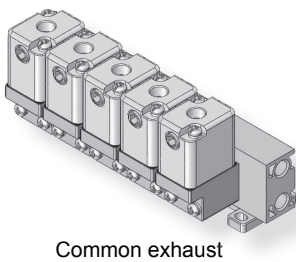
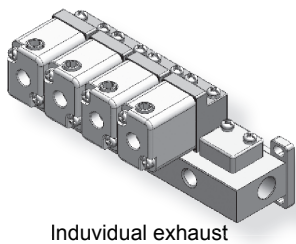
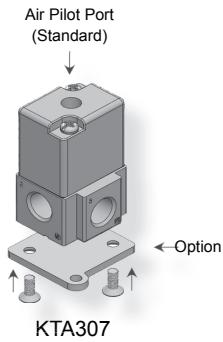
## Specifications

Type	KSA4130	KSA4230
Fluid	Air, Vacuum, Inert gas	
Port size	Rc(PT) 3/8, 1/2, G 3/8, 1/2	
Pilot port size	Rc(PT) 1/8	
Effective sectional area Smm <sup>2</sup> (Cv)	Rc(PT) 3/8	43 (2.4)
	Rc(PT) 1/2	49 (2.72)
Operating pressure	0~10kgf/cm <sup>2</sup> (0~1MPa)	
Pilot pressure	1~10kgf/cm <sup>2</sup> (0.1~1MPa)	
Max. operating frequency	5 cycle/sec	3 cycle /sec
Lubrication	Not required	
Manual override	Push button type available (Option)	
Ambient temperature	-20℃ ~50℃	
Fluid temperature	5℃ ~60℃	
Weight	750g	860g

Pneumatic Solenoid Valve

Operated Valve  
(3 Port Poppet/Universal Port Type)

## How to Order



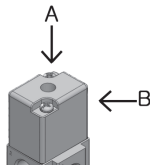
- A single valve with 6 valve functions. (Universal porting type)
- As it has the structure of preventing the fixation of a valve, it is resistant to dust and operates perfectly.
- Possible to use in vacuum.

### ① Type

T : Direct piping type  
O : Manifold type

### ② Air supply direction

A : Vertical  
B : Horizontal



※ B port can be accessed if the plug in B pilot port is being inserted into A port.

### ③ Port type

Nil : Rc(PT) (Standard)  
G : G

### ④ Function

Function	Symbol	Function	Symbol
Nil		Vacuum+Air 1Port-Vacuum 3Port-Air	
V	N.C 	V	Air + Vacuum 1Port-Air 3Port-Vacuum
	N.O 		

### ⑤ Port size

01 : 1/8  
02 : 1/4

### ⑥ Option

Nil : Without bracket  
B : With bracket

### ⑦ Number of valve on manifold block

02 : 2 pcs  
03 : 3 pcs  
~

### ⑧ Exhaust port type

2 : Common exhaust  
3 : Individual exhaust

※ Only for KOA(B) Series.

## Specifications

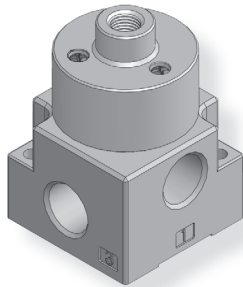
Type	Air	Vacuum
Fluid	Air, Vacuum, Inert gas	
Port size	Rc(PT) 1/8, 1/4, G 1/8, 1/4	
Effective sectional area Smm <sup>2</sup> (Cv)	3.2mm <sup>2</sup> (0.18)	
Operating pressure	0~10kgf/cm <sup>2</sup> (0~1MPa)	10~760Torr (1~100kPa abs.)
Pilot pressure	2~10kgf/cm <sup>2</sup> (0.2~1MPa)	
Pilot port size	1/8	
Lubrication	Not required	
Ambient temperature	-10℃~50℃	
Fluid temperature	5℃~80℃	
Weight	140g	

## Applications

Type	3 Port N.C valve	3 Port N.O valve	Divider valve
Solenoid off			
Solenoid on			
Type	2 Port N.C valve	2 Port N.O valve	Selector valve
Solenoid off			
Solenoid on			



Operated Valve  
(3 Port Poppet/Universal Port Type)



KTA317

- A single valve with 6 valve functions.  
(Universal porting type)
- As it has the structure of preventing the fixation of a valve, it is resistant to dust and operates perfectly.
- Possible to use in vacuum.

## How to Order

KTA    317    - 01

①                      ②                      ③

### ① Port type

Nil : Rc(PT) (Standard)  
G : G

### ③ Port size

02 : 1/4  
03 : 3/8

### ② Function

Function		Symbol	Function		Symbol
Nil	Air		W	Vacuum+Air	
	Vacuum			1Port - Vacuum	
V	N.C		X	3Port - Air	
	N.O			Air+Vacuum	
				1Port - Air	
				3Port - Vacuum	

Pneumatic Solenoid Valve

## Specifications

Type	Air	Vacuum
Fluid	Air, Vacuum	
Port size	Rc(PT) 1/4, 3/8, G 1/4, 3/8	
Effective sectional area Smm <sup>2</sup> (Cv)	11mm <sup>2</sup> (0.6)	
Operating pressure	0~10kgf/cm <sup>2</sup> (0~1MPa)	10~760 Torr (1~100kPa abs.)
Pilot pressure	1~10kgf/cm <sup>2</sup> (0.1~1MPa)	
Pilot port size	1/8	
Lubrication	Not required	
Ambient temperature	-10℃~50℃	
Fluid temperature	5℃~80℃	
Weight	200g	

## Applications

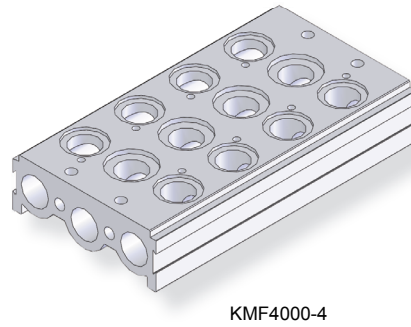
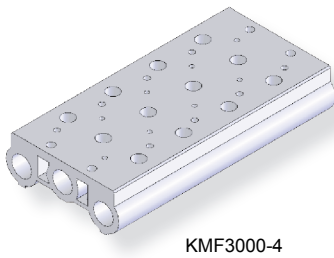
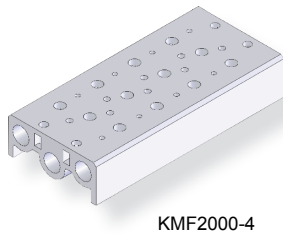
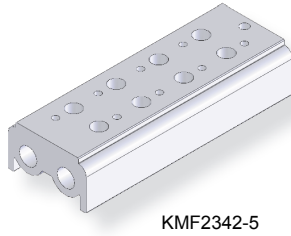
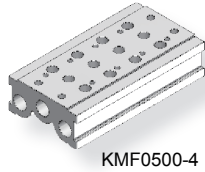
Type	3 Port N.C valve		3 Port N.O valve		Divider valve	
Solenoid off						
Solenoid on						
Type	2 Port N.C valve		2 Port N.O valve		Selector valve	
Solenoid off						
Solenoid on						

## Manifold Block

## How to Order

KMF    2000 - 05

①                      ②                      ③



### ① Port type

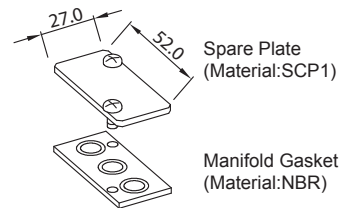
Nil : Rc(PT) (Standard)  
G : G

### ② Series

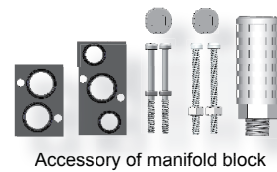
0100 : Manifold block for KT100(3Port)  
0500 : Manifold block for KS105(5Port)  
1000 : Manifold block for KS210(5Port)  
2000 : Manifold block for KS320(5Port)  
3000 : Manifold block for KS530(5Port)  
4000 : Manifold block for KS640(5Port)  
2341 : Manifold block for KS341(3Port)  
2342 : Manifold block for KS342(3Port)

### ③ Station & Accessory

02 : 2 stations  
03 : 3 stations  
04 : 4 stations  
05 : 5 stations  
~  
10 : 10 stations  
S.P : Spare plate



※ Model : KMF2000-S.P



## Specifications

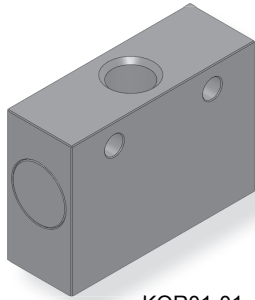
Model	Port size	Stations	KCC	CKD	SMC	SY	TPC	YPC	PARKER
KMF-0100	M5	2 ~ 20	KT100	-	-	-	-	-	-
KMF-0500	1/8	2 ~ 10	KS105(M5)	4KA-110	VZ-3120	SV-51	-	SF1000	-
KMF-1000	1/4	1 ~ 10	KS210(1/8)	4KA-210	VZ-5120	SV-110	DS2010	SF2000	PHS510
KMF-2000	1/4	1 ~ 20	KS320(1/4)	-	VF-3130	SV-210	DS3000	SF4000	PHS520
KMF-3000	3/8	1 ~ 20	KS530(3/8)	-	VF-5120	SV-310	DS5000	SF5000	PHS530
KMF-4000	1/2	2 ~ 10	KS640(1/2)	-	-	SV-420	DS5000	SF6000	PHS540
KMF-2341	1/4	2 ~ 10	KS341(1/8)	-	-	-	-	-	-
KMF-2342	1/4	2 ~ 10	KS342(1/4)	-	VF-342	-	DS-301	-	-

Logic Valve

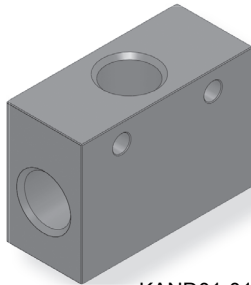
## How to Order

KOR    01 - 01      KAND    01 - 01

1    2    3                            1



KOR01-01  
OR (SHUTTLE) VALVE



KAND01-01  
AND VALVE

### ① Port type

Nil : Rc(PT) (Standard)  
G : G

### ② Body nominal size

01 : 1/8 (16mm)  
02 : 1/4 (16mm)

### ③ Port size

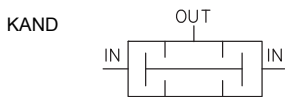
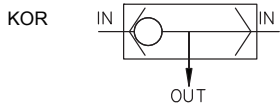
01 : 1/8  
02 : 1/4

## Specifications

Type	KOR01-01	KOR02-02	KAND01-01
Fluid	Air, Inert gas		
Proof pressure	15kgf/cm <sup>2</sup> (1.5MPa)		
Operating pressure	1~10kgf/cm <sup>2</sup> (0.1~1MPa)		
Optimum operating pressure differential	0.5kgf/cm <sup>2</sup> (50kPa)		
Ambient & fluid temperature	5℃ ~ 60℃		
Port size	Rc(PT)1/8	Rc(PT)1/4	Rc(PT)1/8
Effective sectional area	9mm <sup>2</sup>	9mm <sup>2</sup>	9.9mm <sup>2</sup>
Weight	54g	62g	60g

Pneumatic Solenoid Valve

### Symbol



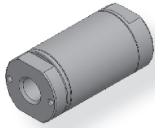
- Excellent durability with its non-lubricated type.
- Relay valves for controlling pneumatic signal lines.
- KOR type - 3 ported check valve with one output and 2 pneumatic signal input ports.  
Output always supplied by high pressure inlet.
- KAND type - 3 port valve with one output and 2 pneumatic signal input ports. Only when air is supplied to both input ports does air flow to the output port. When air pressure differs, pressure in the lower amount flows to the output port.

## Check Valve

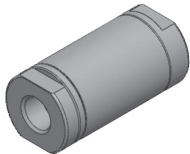
## How to Order

KACV   2000 - 01

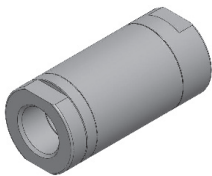
①                      ②                      ③



KACV2000-01

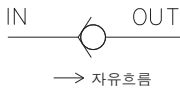


KACV4000-04



KACV6000-10

Symbol



- Excellent durability with its non-lubricated type.
- Large capacity valve, can be used for large actuator.
- Quick response time with low craking pressure.

### ① Port type

Nil : Rc(PT) (Standard)  
G : G

### ② Bore size

2000 : ø20  
4000 : ø32  
6000 : ø40

### ③ Port size

01 : 1/8  
02 : 1/4  
03 : 3/8  
04 : 1/2  
06 : 3/4  
10 : 1

## Specifications

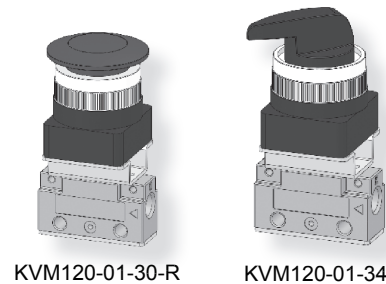
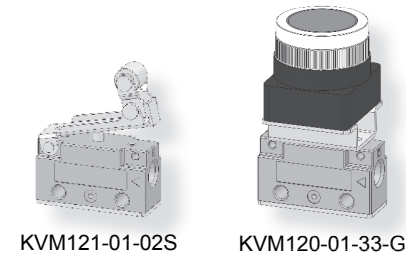
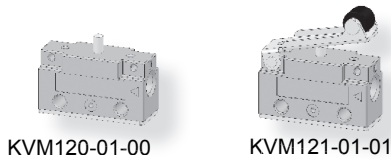
Type	KACV2000-01	KACV2000-02	KACV4000-03
Fluid	Air		
Proof pressure	15kgf/cm <sup>2</sup> (1.5MPa)		
Operating pressure	0.3~10kgf/cm <sup>2</sup> (0.03~1MPa)		
Ambient & fluid temperature	5℃ ~ 60℃		
Port size	Rc(PT) 1/8	Rc(PT) 1/4	Rc(PT) 3/8
Effective sectional area	28mm <sup>2</sup>		94mm <sup>2</sup>
Weight	40g		170g
Type	KACV4000-04	KACV6000-06	KACV6000-10
Fluid	Air		
Proof pressure	15kgf/cm <sup>2</sup> (1.5MPa)		
Operating pressure	0.3~10kgf/cm <sup>2</sup> (0.03~1MPa)		
Ambient & fluid temperature	5℃ ~ 60℃		
Port size	Rc(PT) 1/2	Rc(PT) 3/4	Rc(PT) 1
Effective sectional area	110mm <sup>2</sup>	220mm <sup>2</sup>	250mm <sup>2</sup>
Weight	170g	870g	

## 2, 3 Port Mechanical Valve

### How to Order

KVM    1   2     0   - 01 -   30   -   R  

①                    ②                    ③                    ④                    ⑤



① Port type

Nil : Rc(PT) (Standard)  
G : G

② Number of port

2 : 2 Port  
3 : 3 Port

③ Stem type

0 : Long  
1 : Short

\* Short stem is available for actuator type 01 and type 02. Long stem is available for actuator type 30, type 33 and type 34.

④ Type of actuator

00 : Standard  
01 : Roller lever  
02 : One-way lever  
30 : Push button  
33 : Push button (Flat type)  
34 : Selector

⑤ Option

S : Hard steel roller  
R : Red (Button color)  
G : Green (Button color)

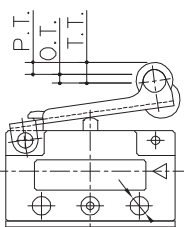
Pneumatic Solenoid Valve

Function	KVM 120(1)-01-00	KVM 121-01-01(S)	KVM 121-01-02(S)	KVM 120-01-30-33	KVM 120-01-34
Symbol					
Function	KVM 130(1)-01-00	KVM 131-01-01(S)	KVM 131-01-02(S)	KVM 130-01-30-33	KVM 130-01-34
Symbol					

## Specifications

Fluid	Compressed air
Port size	Rc(PT) 1/8, G 1/8
Effective sectional area Smm <sup>2</sup> (Cv)	2.5 (0.14)
Operating pressure	0~9.9kgf/cm <sup>2</sup> (0~0.99MPa)
Lubrication	Not required
Ambient temperature	0℃~60℃
Weight(Standard type)	98g

## Operating Point of Mechanical Valve



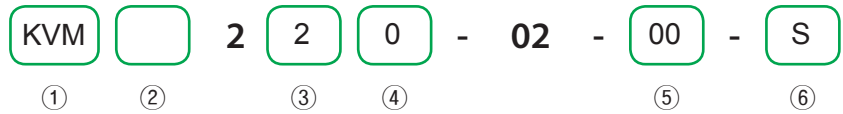
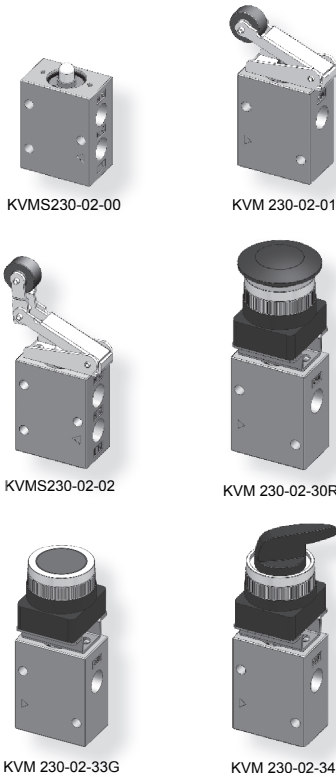
P.T. : Working distance from the free position to the operating position of the actuator.  
O.T. : Working distance from the operating position to the operating limit of the actuator.  
T.T. : Working distance from the free position to the operating limit of the actuator.  
F.O.F. : The power for operating actuator from the free position to the operating limit position.

\* At 5kgf/cm<sup>2</sup>

Model	F.O.F	P.T.	O.T.	T.T.
KVM120-01-00	2.0kgf	1.5mm	1.5mm	3.0mm
KVM121-01-00	2.0kgf	1.5mm	1.5mm	3.0mm
KVM130-01-00	2.0kgf	1.5mm	1.5mm	3.0mm
KVM131-01-00	2.0kgf	1.5mm	1.5mm	3.0mm
KVM121-01-01,02(S)	1.2kgf	3.2mm	2.3mm	5.5mm
KVM131-01-01,02(S)	1.2kgf	3.2mm	2.3mm	5.5mm
KVM120-01-30, 33(R, G)	2.5kgf	6.0mm	1.6mm	7.6mm
KVM130-01-30, 33(R, G)	2.5kgf	6.0mm	1.6mm	7.6mm
KVM120-01-34	1.8kgf	-	-	90℃
KVM130-01-34	1.8kgf	-	-	90℃

## 2, 3 Port Mechanical Valve

## How to Order



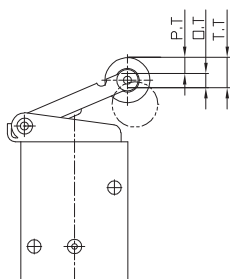
- ① Series  
 KVM : Mechanical valve  
 KVMS : Mechanical valve 3 Port  
 (for both N.O, N.C)
- ② Port type  
 Nil : Rc(PT) (Standard)  
 G : G
- ③ Number of port  
 2 : 2 Port  
 3 : 3 Port
- ④ Stem type  
 0 : Standard type
- ⑤ Type of actuator  
 00 : Standard  
 01 : Roller lever  
 02 : One-way lever  
 30 : Push button  
 33 : Push button (Flat type)  
 34 : Selector
- ⑥ Option  
 S : Hard steel roller  
 R : Red (Button color)  
 G : Green (Button color)

Function	KVM 220-02-00	KVM 220-02-01(S)	KVM 220-02-02(S)	KVM 220-02-30-33	KVM 220-02-34
Symbol					
Function	KVM(S) 230-02-00	KVM 230-02-01(S)	KVM 230-02-02(S)	KVM 230-02-30-33	KVM 230-02-34
Symbol					
Function	KVMS 230-02-00	KVMS 230-02-01	KVMS 231-02-02(S)	KVMS 230-02-30-33	KVMS 230-02-34
Symbol					

## Specifications

Fluid	Compressed air
Port size	Rc(PT) 1/4, G 1/4
Effective sectional area Smm <sup>2</sup> (Cv)	19 (1.0)
Operating pressure	0~9.9kgf/cm <sup>2</sup> (0~0.99MPa)
Lubrication	Not required
Ambient temperature	0°C~60°C
Weight(Standard type)	136g

## Operating Point of Mechanical Valve



- P.T. : Working distance from the free position to the operating position of the actuator.
- O.T. : Working distance from the operating position to the operating limit of the actuator.
- T.T. : Working distance from the free position to the operating limit of the actuator.
- F.O.F. : The power for operating actuator from the free position to the operating limit position.

※ At 5kgf/cm<sup>2</sup>

Model	F.O.F	P.T.	O.T.	T.T.
KVM 220-02-00	5.2kgf	3.0mm	2.0mm	5.0mm
KVM(S) 230-02-00	5.2kgf	3.0mm	2.0mm	5.0mm
KVM 220-02-01(S)	2.4kgf	6.5mm	4.5mm	11mm
KVM(S) 230-02-01(S)	2.4kgf	6.5mm	4.5mm	11mm
KVM 220-02-02(S)	2.2kgf	7.0mm	5.0mm	12mm
KVM(S) 230-02-02(S)	2.2kgf	7.0mm	5.0mm	12mm
KVM 220-02-30, 33(R, G)	5.2kgf	4.9mm	1.6mm	6.5mm
KVM(S) 230-02-30, 33(R, G)	5.2kgf	4.9mm	1.6mm	6.5mm
KVM 220-02-34	2.3kgf	-	-	90°C
KVM(S) 230-02-34	2.3kgf	-	-	90°C

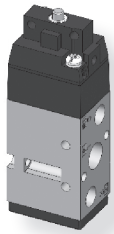


## 5 Port Mechanical valve

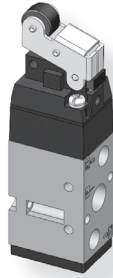
### How to Order

KVM    3   5     0   - 02 -   01   -   S  

①                    ②                    ③                    ④                    ⑤



KVM350-02-00



KVM350-02-01

① Port type

Nil : Rc(PT) (Standard)  
G : G

② Number of port

5 : 5 Port

③ Stem type

0 : Standard type

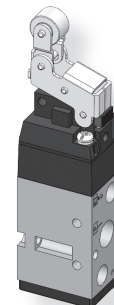
④ Type of actuator

00 : Standard  
01 : Roller lever  
02 : One-way lever  
30 : Push button  
33 : Push button (Flat type)  
34 : Selector

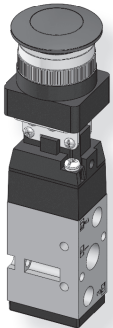
⑤ Option

S : Hard steel roller  
R : Red (Button color)  
G : Green (Button color)

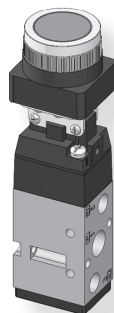
Pneumatic Solenoid Valve



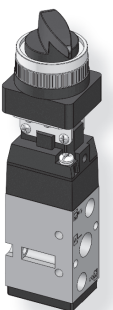
KVM350-02-02S



KVM350-02-30



KVM350-02-33



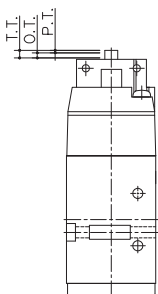
KVM350-02-34

### Specifications

Fluid	Compressed air
Port size	Rc(PT) 1/4, G 1/4
Effective sectional area Smm <sup>2</sup> (Cv)	19 (1.0)
Operating pressure	0~9.9kgf/cm <sup>2</sup> (0~0.99MPa)
Lubrication	Not required
Ambient temperature	0°C~60°C
Weight(Standard type)	260g

Function	KVM 350-02-00	KVM 350-02-01(S)	KVM 350-02-02(S)	KVM 350-02-30 -33	KVM 350-02-34
Symbol					

### Operating Point of Mechanical Valve



P.T. : Working distance from the free position to the operating position of the actuator.  
O.T. : Working distance from the operating position to the operating limit of the actuator.  
T.T. : Working distance from the free position to the operating limit of the actuator.  
F.O.F. : The power for operating actuator from the free position to the operating limit position.

\* At 5kgf/cm<sup>2</sup>

Model	F.O.F	P.T.	O.T.	T.T.
KVM350-02-00	1.6kgf	1.0mm	2.0mm	3.0mm
KVM350-02-01(S)	0.8kgf	2.2mm	4.0mm	6.2mm
KVM350-02-02(S)	0.7kgf	2.4mm	4.6mm	7.0mm
KVM350-02-30, 33(R, G)	2.1kgf	4.8mm	1.7mm	6.5mm
KVM350-02-34	2.3kgf	-	-	90°C

## Small Mechanical Valve



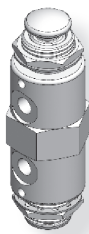
K2P



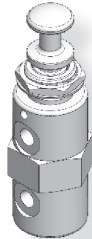
K3P



K4P



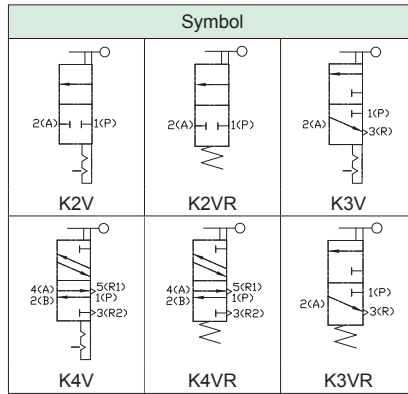
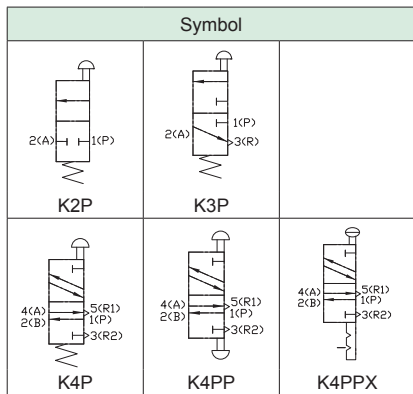
K4PP



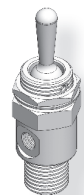
K4PPX

## Specifications

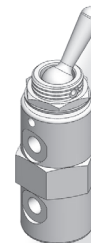
Type	K2P	K3P	K4P	K4PP	K4PPX
Fluid	Air, Inert gas				
Port size	Male thread:Rc(PT)1/8, Female thread:M5×0.8				
Effective sectional area Smm <sup>2</sup> (Cv)	1.8(0.08)		2.5(0.12)		
Operating pressure	0~9kgf/cm <sup>2</sup> (0~0.9MPa)				
Proof pressure	13.5kgf/cm <sup>2</sup> (1.35MPa)				
Max. operating frequency	5 cycle/sec				
Lubrication	Not required				
Type of actuator	Push Button Spring Return			Double Push Button Holding Type	Push-Pull Button Holding Type
Number of port	2 N/C	3 N/C	5		
Stroke	2.4mm		Pre-Stroke 0.8mm Main Stroke 0.8mm Over Stroke 0.8mm		
Ambient & fluid temperature	0°C ~ 60°C				
Accessory LOCK NUT(110-21A) LOCK WASHER(100-35)	1 Each			2 Each	1 Each
Weight	35g	30g	66g	71g	68g



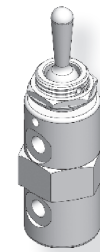
K2V, K3V



K2VR, K3VR



K4V



K4VR

## Specifications

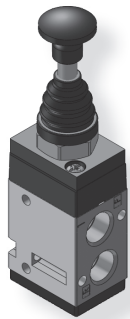
Type	K2V	K3V	K2VR	K3VR	K4V	K4VR
Fluid	Air, Inert gas					
Port size	Male thread:Rc(PT)1/8, Female thread:M5×0.8					
Effective sectional area Smm <sup>2</sup> (Cv)	1.8(0.08)			2.5(0.12)		
Operating pressure	0~9kgf/cm <sup>2</sup> (0~0.9MPa)					
Proof pressure	13.5kgf/cm <sup>2</sup> (1.35MPa)					
Max. operating frequency	5 cycle/sec					
Lubrication	Not required					
Type of actuator	Holding Type		Pinned Lever Spring Return Type		Holding Type	Spring Return Type
Number of port	2 Port	3 Port	2 Port, N.C	3 Port, N.C	5 Port	
Stroke	2.4mm		Pre-Stroke 0.8mm Main Stroke 0.8mm Over Stroke 0.8mm			
Ambient & fluid temperature	0°C ~ 60°C					
Accessory LOCK NUT(110-21A) LOCK WASHER(100-35)	1 Each					
Weight	30g			66g		

## Hand Push Pull Valve

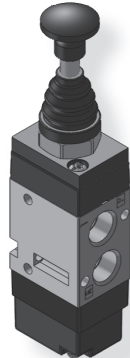
### How to Order

KHP    320 S - 02 - B

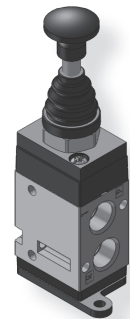
①      ②      ③      ④      ⑤



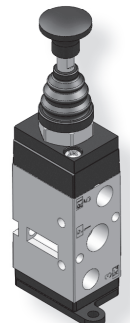
KHP342S-02



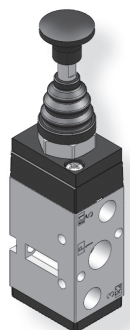
KHP342BV-02



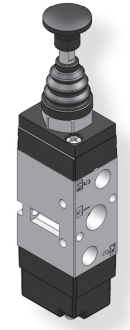
KHP342D-02-B



KHP320D-02-B



KHP320S-02



KHP320BV-02

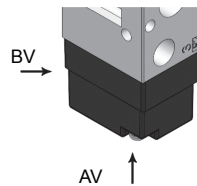
- Excellent durability with its non-lubricated type.
- Minimized installing area with its small size.
- Valve can be installed vertically by selecting bracket attached type.

① Port type  
Nil : Rc(PT) (Standard)  
G : G

② Number of port  
342 : 3 Port  
320 : 5 Port

③ Function

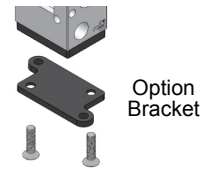
Function	Symbol	
	KHP342	KHP320
S Spring Return		
D Push Pull		
BV (Vertical) Air Return (Standard)		
AV (Horizontal) Air Return (Semi-standard)		



Port Direction

④ Port size  
01 : 1/8  
02 : 1/4

⑤ Option  
Nil : Without bracket  
B : With bracket



Option Bracket

※ Bracket only available for KHP320/342S/D type.  
(Option : Bracket 1pc, Screw for bracket 2 pcs)

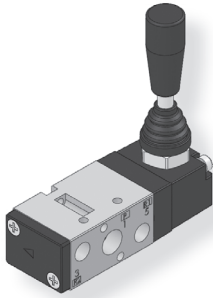
Pneumatic Solenoid Valve

### Specifications

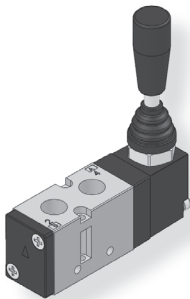
Type	S	D	AV / BV
Fluid	Compressed air		
Port size	Rc(PT) 1/8, 1/4, G1/8, 1/4		
Effective sectional area Smm <sup>2</sup> (Cv)	19(1.0)		
Operating pressure	0~9kgf/cm <sup>2</sup> (0~0.9MPa)		
Lubrication	Not required		
Ambient & fluid temperature	0°C ~ 60°C		
Weight	KHP342	185g	235g
	KHP320	210g	260g

## Hand Valve

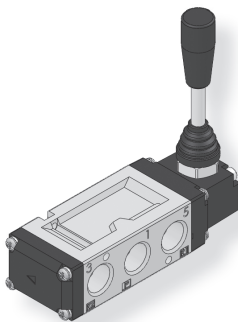
## How to Order



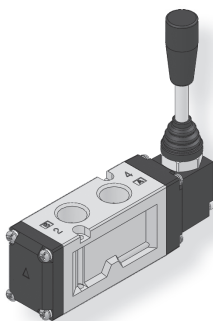
KHV320H-02



KHV320H-02-V



KHV530H



KHV530H-V

- ① Port type  
Nil : Rc(PT) (Standard)  
G : G
- ② Body nominal size  
320 : Body size 1/4  
530 : Body size 3/8
- ③ Function
- ④ Port size  
01 : 1/8 (Only for KHV320)  
02 : 1/4 (Only for KHV320)  
Nil : 3/8 (Only for KHV530)
- ⑤ Lever position  
Nil : Horizontal  
V : Vertical

Function		Symbol	
S	Single acting		
D	Double acting		
SPRING RETURN TYPE		DETENT TYPE	
Function	Symbol	Function	Symbol
H	Closed center	HD	Closed center
I	Pressure center	ID	Pressure center
J	Exhaust center	JD	Exhaust center

## Specifications

Type	S	D	H/ I/ J
Fluid	Air, Inert gas		
Port size	Rc(PT) 1/8, 1/4, 3/8, G1/8, 1/4, 3/8		
Effective sectional area Smm <sup>2</sup> (Cv)	KHV320 : 19(1.0) KHV530 : 45(2.5)		KHV320 : 14(0.8) KHV530 : 38(2.1)
Operating pressure	0~9kgf/cm <sup>2</sup> (0~0.9MPa)		
Lubrication	No Lubrication		
Ambient & fluid temperature	5°C ~ 60°C		
Applicable cylinder	KHV320 : Ø32~Ø100 KHV530 : Ø32~Ø125		
Weight	KHV320 : 290g KHV530 : 470g		

- Excellent durability with its non-lubricated type.
- Minimized installing area with its small size. (KHV320)
- Large capacity valve, can be used for large actuator. (KHV530)
- Easy to install if horizontal type(KAV) or vertical type(KBV) is selected depending on installation direction.

# KHV series

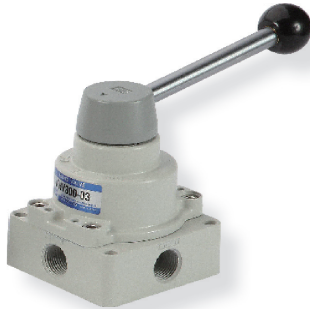
# PNEUMATIC SOLENOID VALVE

Hand Valve

## How to Order

KHV    - 3 0 0 - 03

①                      ②                      ③                      ④                      ⑤



KHV-300-03

① Port type

Nil : Rc(PT) (Standard)  
G : G

② Body nominal size

2 : 1/4  
3 : 3/8  
4 : 1/2

③ Piping & mounting method

	Piping	Mounting
0	Side	Body
1	Side	Pannel

④ Positions

Position	Symbol
0 3 Position	
2 2 Position	

⑤ Port size

	Body size		
	2	3	4
02	•		
03		•	
04		•	•
06			•

Pneumatic Solenoid Valve

## Specifications

Type	KHV200	KHV300	KHV400
Fluid	Compressed air		
Max. operating pressure	9.9kgf/cm <sup>2</sup> (0.99MPa)		
Proof pressure	15kgf/cm <sup>2</sup> (1.5MPa)		
Effective sectional area mm <sup>2</sup> (Cv)	7.5 (0.4)	20 (1.1)	55 (3.1)
Ambient & fluid temperature	5°C ~ 60°C		
Operating angle	90°		

# SFVM series

Foot Valve

## How to Order

SFVM    2 3 0 - 02

①                      ②                      ③



SFVM230-02

① Port type

Nil : Rc(PT) (Standard)  
G : G

③ Port size

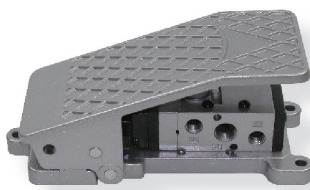
02 : 1/4  
03 : 3/8

② Number of port

Symbol		
2	3	5
2 Port SFVM220-02(1/4)	3 Port SFVM230-02(1/4)	5 Port SFVM250-02(1/4) SFVM250-03(3/8)

## Specifications

Type	SFVM220-02 230-02 250-02	SFVM250-03
Fluid	Air	
Port size	Rc(PT) 1/4	Rc(PT) 3/8
Effective sectional area (Cv)	19mm <sup>2</sup> (1.0)	45mm <sup>2</sup> (2.4)
Operating pressure	10kgf/cm <sup>2</sup> (1MPa)	
Ambient & fluid temperature	0°C ~60°C	
Lubrication	Not required	
Weight	532g	650g



SFVM250-02

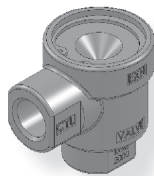
# KQE2000 series

# PNEUMATIC SOLENOID VALVE

## Quick Exhaust Valve

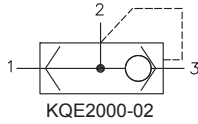


KQE2000-02

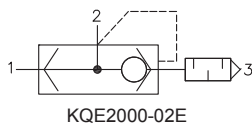


KQE2000-02E  
(With built-in silencer at the exhaust port)

### Symbol



KQE2000-02



KQE2000-02E

- Excellent durability with its non-lubricated type.
- Excellent air exhaust-characteristic with optimal flow design.
- Easy to mount and to maintain with light weight and small size

## How to Order

KQE 2000   - 02 E

①                      ②                      ③

- ① Port type  
Nil : Rc(PT) (Standard)  
G : G
- ② Port size  
01 : 1/8  
02 : 1/4
- ③ Silencer  
Nil : Without silencer  
E : With silencer

## Specifications

Type	KQE2000-02		KQE2000-02E	
Fluid	Air, Inert gas			
Port size	Rc(PT) 1/8	Rc(PT) 1/4	Rc(PT) 1/8	Rc(PT) 1/4
Effective sectional area Smm <sup>2</sup> (Cv)	IN-OUT	23(1.2)	29(1.6)	20(1.1)
	OUT-EX	29(1.6)	33(1.8)	27(1.5)
Operating pressure	0.5~10kgf/cm <sup>2</sup> (0.05~1MPa)			
Weight	100g		120g	
Lubrication	Not required			
Ambient & fluid temperature	5°C~60°C			

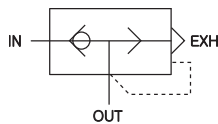
# SQE series

## Quick Exhaust Valve

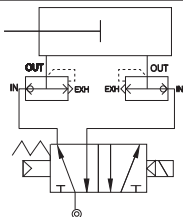


SQE 3000

### Symbol



### Applications



## How to Order

SQE   2 000 - 02

①                      ②                      ③

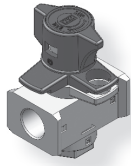
- ① Port type  
Nil : Rc(PT) (Standard)  
G : G
- ② Body nominal size  
2 : Body size 1/4  
3 : Body size 1/8  
4 : Body size 1/2
- ③ Port size  
02 : 1/4  
03 : 3/8  
04 : 1/2

## Specifications

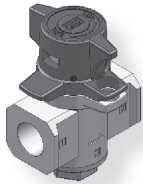
Fluid	Air
Proof pressure	15kgf/cm <sup>2</sup> (1.5MPa)
Max. operating pressure	9.9kgf/cm <sup>2</sup> (0.99MPa)
Ambient temperature	5°C~60°C
Weight (Standard type)	235g

KVHS   30 - 02 -  

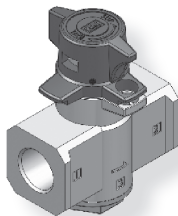
①            ②            ③            ④



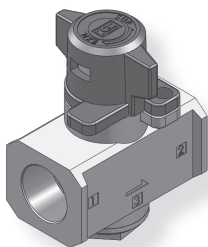
KVHS20-02



KVHS30-03



KVHS40-04



KVHS50-10

① Port type

Nil : Rc(PT) (Standard)  
G : G

② Body nominal size

20 : 1/8, Body size 1/4  
30 : 1/4, Body size 3/8  
40 : 3/8, Body size 1/2  
50 : 3/4, Body size 1

③ Port size

Port size		Body nominal size			
		20	30	40	50
01	1/8	•			
02	1/4	•	•		
03	3/8		•	•	
04	1/2			•	
06	3/4				•
10	1				•

④ Locking hole

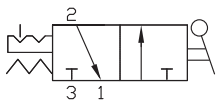
Nil : 1 (Exhaust)  
2 : 2 (Exhaust/Supply)

Pneumatic Solenoid Valve

## Specifications

Type	KVHS20		KVHS30		KVHS40		KVHS50		
Fluid	Compressed air								
Port size	IN, OUT	Rc(PT)1/8 G1/8	Rc(PT)1/4 G1/4	Rc(PT)1/4 G1/4	Rc(PT)3/8 G3/8	Rc(PT)3/8 G3/8	Rc(PT)1/2 G1/2	Rc(PT)3/4 G3/4	Rc(PT)1 G1
	EXH	Rc(PT)1/8, G1/8		Rc(PT)1/4, G1/4		Rc(PT)3/8, G3/8		Rc(PT)1/2, G1/2	
Effective sectional area Smm <sup>2</sup> (Cv)	IN	10 (0.54)	14 (0.76)	16 (0.87)	31 (1.68)	50.5 (2.7)	80.5 (4.36)	133 (7.2)	185 (10)
	OUT EXH	11 (0.6)	16 (0.87)	14 (0.76)	29 (1.57)	32 (1.73)	41 (2.2)	49 (2.7)	60 (3.3)
Operating pressure	0~9.0kgf/cm <sup>2</sup> (0~0.9MPa)								
Proof pressure	15kgf/cm <sup>2</sup>								
Ambient & fluid temperature	0~60°C								
Handle switching angle	90°								
Weight	190g		250g		350g		770g		

Symbol



- Combination with a modular style FRL (KCC or SMC) is possible.
- Easy-operated manual switching valve
- When in the exhaust operation, the valve may be padlock secured. (Prevents accidental start-ups)

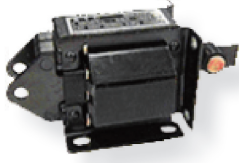


STC - 1092

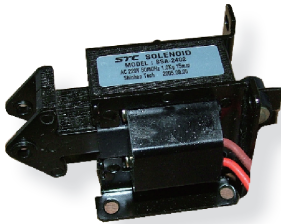
①

① Specifications

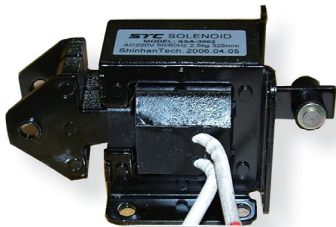
Refer to the following table.



STC-1092



STC-2402



STC-3002

- Excellent heat resistance, water resistance, oil resistance and impact resistance.
- Integration of coil bobbin and plunger guide improve electrical and mechanical properties.

## Specifications

Model	STC-1092	STC-2402	STC-2502	STC-2602	STC-3002
Stroke	10 mm	15 mm	15 mm	15 mm	20 mm
Force kgf(N)	≤0.6(5.8)	≤1.0(9.8)	≤1.5(14.7)	≤2.0(19.6)	≤3.0(29.4)
Voltage	AC 110V, 220V 50/60Hz				
Coil insulation	Class B				
Insulation resistance	100MΩ at 500V (Room temperature and humidity)				
Withstand voltage	AC1500V for 1 minute	AC2000V for 1 minute			
Temperature rise	≤85℃ (Resistance method)				
Weight	235g	360g	430g	490g	760g
Model	STC-3502	STC-3602	STC-362	STC-3702	STC-4402
Stroke	20 mm	20 mm	20 mm	20 mm	30 mm
Force kgf(N)	≤3.0(29.4)	≤4.0(39.2)	≤4.0(39.2)	≤5.0(49.0)	≤5.0(49.0)
Voltage	AC 110V, 220V 50/60Hz				
Coil insulation	Class B				
Insulation resistance	100MΩ at 500V (Room temperature and humidity)				
Withstand voltage	AC2000V for 1 minute				
Temperature rise	≤85℃ (Resistance method)				
Weight	1015g	1175g	-	1315g	2130g
Model	STC-442	STC-4502	STC-452	STC-4602	STC-472
Stroke	30 mm	30 mm	30 mm	30 mm	30 mm
Force kgf(N)	≤5.0(49.0)	≤6.0(58.8)	≤7.0(68.6)	≤8.0(78.4)	≤10.0(98.0)
Voltage	AC 110V, 220V 50/60Hz				
Coil insulation	Class B				
Insulation resistance	100MΩ at 500V (Room temperature and humidity)				
Withstand voltage	AC2000V for 1 minute				
Temperature rise	≤85℃ (Resistance method)				
Weight	-	2650g	-	3250g	-



# STD series

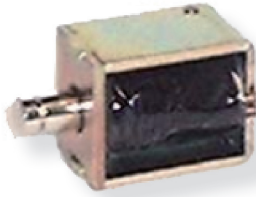
## PNEUMATIC SOLENOID VALVE

DC Solenoid

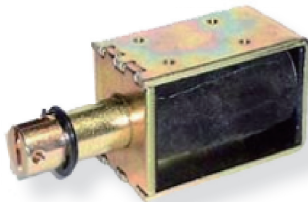
### How to Order

STD - 06 A S

①                      ②                      ③



STD-06A



STD-12A

① Bore size of rod

- 06 : Ø6
- 08 : Ø8
- 10 : Ø10
- 12 : Ø12
- 16 : Ø16

② Rod type

- A : Standard
- E : E-type

③ Spring

- Nil : Without spring
- S : With spring

### Specifications

Model	STD-06A	STD-06AS	STD-08A	STD-08AS
Stroke	5mm	5mm	6mm	6mm
Voltage	DC12V,24V			
Coil insulation	Class A or equivalent			
Insulation resistance	100MΩ at 500V (Room temperature and humidity)			
Withstand voltage	AC1800V for 1 second			
Temperature rise	≤65℃ at 2.1W (Continue)		≤65℃ at 4.0W (Continue)	
Weight	40g	42g	90g	93g
Model	STD-10A	STD-12E	STD-12ES	STD-16A
Stroke	8mm	10mm	10mm	15mm
Voltage	DC12V,24V			
Coil insulation	Class A or equivalent			
Insulation resistance	100MΩ at 500V (Room temperature and humidity)			
Withstand voltage	AC1800V for 1 second			
Temperature rise	≤65℃ at 4.2W (Continue)	≤65℃ at 6.0W (Continue)		≤65℃ at 10W(Continue)
Weight	122g	210g	215g	430g

Pneumatic Solenoid Valve

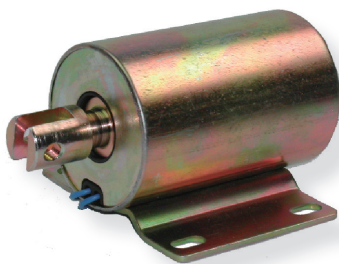
# STD-18 series

Silence Solenoid

### How to Order

STD - 18A 24V

①



① Voltage

- 12V : DC12V
- 24V : DC24V
- 220V : AC220V

### Specifications

Max. stroke	25mm
Suction force	2.0~3.0kgf
Energizing ration	1/1, 1/2, 1/4, 1/6, 1/8, 1/10
Rated energizing	(1/1) When continuously energized
Voltage	AC 110V, 200V, 220V 50/60Hz DC 220V, 100V, 24V, 12V
Temperature rise	≤ 65℃ at rated voltage
Coil insulation	Class E
Weight	682g