

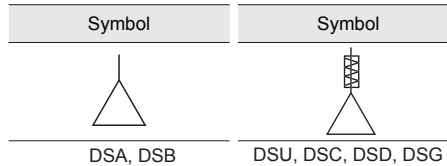
DSA, DSB, DSU, DSC, DSD, DSG series VACUUM EQUIPMENT

Vacuum Unit



Specifications

| Model | | Pad style | | | | Material |
|-------|---------------|-----------|----------|---------|--------------|-------------------------------------|
| | | Basic | Bellows | Flat | Elliptical | |
| DSA1 | Inner dia.(Ø) | 10 ~ 220 | 30 ~ 110 | 10 ~ 40 | 20X50, 30X60 | NBR Silicon Viton Urethane |
| | Stroke(mm) | - | - | - | - | |
| DSA2 | Inner dia.(Ø) | 10 ~ 100 | 30 ~ 110 | 10 ~ 40 | 20X50, 30X60 | |
| | Stroke(mm) | - | - | - | - | |
| DSA3 | Inner dia.(Ø) | 10 ~ 220 | 30 ~ 110 | 10 ~ 40 | 20X50, 30X60 | |
| | Stroke(mm) | - | - | - | - | |
| DSB1 | Inner dia.(Ø) | 60 ~ 220 | 60 ~ 110 | - | - | |
| | Stroke(mm) | - | - | - | - | |
| DSB2 | Inner dia.(Ø) | 10 ~ 50 | 30 ~ 50 | 10 ~ 40 | 20X50, 30X60 | |
| | Stroke(mm) | - | - | - | - | |
| DSB3 | Inner dia.(Ø) | 10 ~ 220 | 30 ~ 110 | 10 ~ 40 | 20X50, 30X60 | |
| | Stroke(mm) | - | - | - | - | |
| DSU | Inner dia.(Ø) | 10 ~ 100 | 30 ~ 110 | 10 ~ 40 | 20X50, 30X60 | |
| | Stroke(mm) | - | - | - | - | |
| DSC | Inner dia.(Ø) | 10 ~ 220 | 30 ~ 110 | 10 ~ 40 | 20X50, 30X60 | |
| | Stroke(mm) | 5 ~ 50 | 15 ~ 70 | 5 ~ 50 | 15 ~ 50 | |
| DSD | Inner dia.(Ø) | 10 ~ 220 | 30 ~ 110 | 10 ~ 40 | 20X50, 30X60 | |
| | Stroke(mm) | 5 ~ 70 | 5 ~ 50 | 5 ~ 50 | 15 ~ 50 | |
| DSG | Inner dia.(Ø) | 20 ~ 100 | 30 ~ 110 | - | 20X50, 30X60 | |
| | Stroke(mm) | 15 ~ 50 | 15 ~ 50 | - | 15 ~ 50 | |

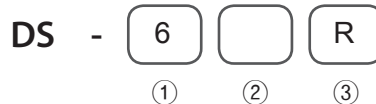


DS series

Vacuum Pad



How to Order



① Pad inner diameter

| Pad size | 6 | 8 | 10 | 15 | 20 | 25 | 30 | 32 | 40 | 50 | 60 | 80 | 100 | 110 | 125 | 160 | 220 | 20×50 | 30×60 |
|------------|---|---|----|----|----|----|----|----|----|----|----|----|-----|-----|-----|-----|-----|-------|-------|
| Basic | • | • | • | • | • | • | • | | • | • | • | • | • | | • | • | • | | |
| Bellows | | | | | | | • | | • | • | • | • | | • | | | | | |
| Flat | | | • | • | • | • | | • | • | | | | | | | | | | |
| Elliptical | | | | | | | | | | | | | | | | | | • | • |

② Pad style

Nil : Basic
B : Bellows
F : Flat
E : Elliptical

③ Pad material

R : NBR
S : Silicon

DMF series

VACUUM EQUIPMENT

Vacuum Pad & Holder

How to Order



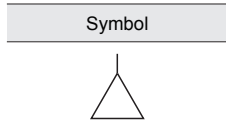
DMF 15 R - M5
 ① ② ③

① Pad inner dia.
15 : Ø15

② Pad material
R : NBR
S : Silicon
V : Viton
U : Urethane

③ Holder
Nil : Pad only
M5 : M5 Male thread
M5F : M5 Female thread

※ Contact us for custom made of V, U type.



※ Custom made of DSC type available. (Stroke of spring: 10mm, 20mm)
 ※ Refer to catalogue for further detail about DSC Series (page [8]-13~14).

DMU series

Vacuum Pad & Holder

How to Order



DMU 2 R - M5
 ① ② ③

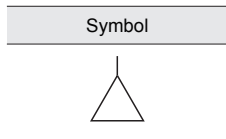
① Pad inner diameter

| | | | |
|---|----|-----|-----|
| 2 | Ø2 | 8A | Ø8 |
| 4 | Ø4 | 10A | Ø10 |
| 6 | Ø6 | 15 | Ø15 |
| 8 | Ø8 | | |

② Pad material
R : NBR
S : Silicon
V : Viton
U : Urethane

③ Holder
Nil : Pad only
M5 : M5 Male thread
M5F : M5 Female thread

※ Contact us for custom made of V, U type.



※ Custom made of DSC type available. (Stroke of spring: 10mm, 20mm)
 ※ Refer to catalogue for further detail about DSC Series (page [8]-13~14).

DMB series

Bellows Vacuum Pad & Holder

How to Order



DMB 5 S - M5
 ① ② ③

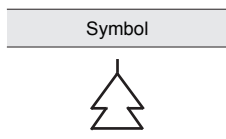
① Pad inner dia.

4 : Ø4
5 : Ø5
8 : Ø8
10 : Ø10
15 : Ø15

② Pad material
R : NBR
S : Silicon
V : Viton
U : Urethane

③ Holder
Nil : Pad only
M5 : M5 Male thread
M5F : M5 Female thread

※ Contact us for custom made of V, U type.



※ Custom made of DSC type available. (Stroke of spring: 10mm, 20mm)
 ※ Refer to catalogue for further detail about DSC Series (page [8]-13~14).

KSV series

VACUUM EQUIPMENT

Vacuum Ejector

How to Order

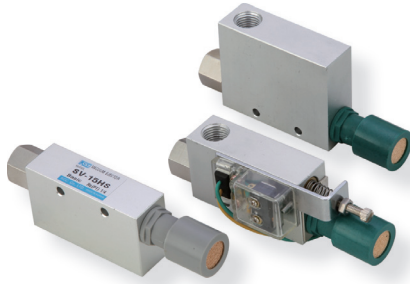
KSV - 10HS

① ② ③

① Series
KSV : Vacuum ejector

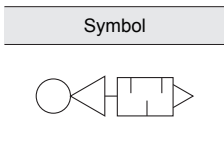
② Nozzle diameter
10HS : Ø1.0
15HS : Ø1.5
20HS : Ø2.0

③ Vacuum switch
Nil : None (Standard)
C : Fixed
CK : Variable



Specifications

| | |
|---------------------|---|
| Fluid | Air |
| Ambient temperature | 0 ~ 60°C |
| Lubrication | Not required |
| Pressure range | 1.0 ~ 9.9kgf/cm ² (0.1 ~ 0.99MPa) |
| Ultimate vacuum | -690 mmHg |
| switch | Nil: None, C: Fixed switch, CK: Adjustable switch |



| Type | Nozzle dia. | Suction rate | Max. vacuum pressure | Air consumption | Supply pressure |
|---------|-------------|--------------|----------------------|-----------------|-----------------|
| Model | mm | ℓ/min(ANR) | -kPa | ℓ/min(ANR) | MPa |
| SV-10HS | 1.0 | 36 | 57.2 | 44 | 0.5 |
| SV-15HS | 1.5 | 95 | 57.2 | 100 | 0.5 |
| SV-20HS | 2.0 | 165 | 57.2 | 180 | 0.5 |

CF series

Vacuum Filter

How to Order

CF - 03

①

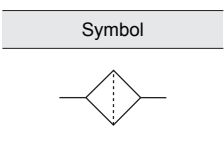
① Thread
03 : Rc(PT)1/8
05 : Rc(PT)1/4
06 : Rc(PT)3/8
600 : Rc(PT)3/4
800 : Rc(PT)1



CF-06



CF-600



Specifications

| | |
|------------|------|
| Fluid | Air |
| Filtration | 40μm |

Vacuum
Equipment

MVO series

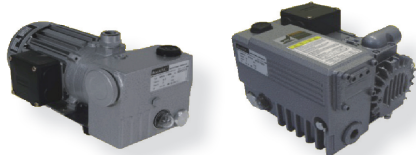
VACUUM EQUIPMENT

Rotary Vane Vacuum Pumps
(Oil Circulated Type)

How to Order

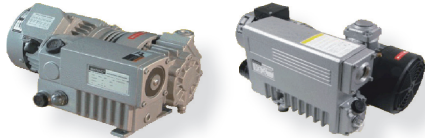
MVO 010 - B C -

① ② ③ ④ ⑤



MVO 006

MVO 008/016



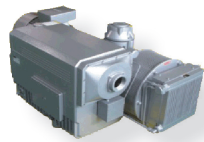
MVO 010/020

MVO 030/040

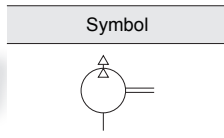


MVO 063/100

MVO 160/250



MVO 400/630



① Series

MVO : Oil circulated
(Built-in exhaust filter)

② Displacement

| | | | |
|-----|----------------------|-----|-----------------------|
| 006 | 6m ³ /hr | 063 | 63m ³ /hr |
| 008 | 8m ³ /hr | 100 | 100m ³ /hr |
| 016 | 16m ³ /hr | 160 | 160m ³ /hr |
| 010 | 10m ³ /hr | 250 | 250m ³ /hr |
| 020 | 20m ³ /hr | 400 | 400m ³ /hr |
| 030 | 30m ³ /hr | 630 | 630m ³ /hr |
| 040 | 40m ³ /hr | | |

③ Motor voltage

| Motor version(1~) | | Motor version(3~) | |
|-------------------|----------|-------------------|----------|
| A | 110/220V | D | 220/380V |
| B | 220V | E | 380V |
| C | 110V | F | 220V |
| L | 240V | G | 440V |
| | | H | 460V |
| | | J | 415V |
| | | K | 200V |

④ Motor hertz (Hz)

A : 60
B : 50
C : 50/60

⑤ Arrival pressure

Nil : Standard
B : 2mbar
C : 20mbar

Specifications

| Type | | | MVO 006 | MVO 008 | MVO 016 | MVO 010 | MVO 020 | MVO 030 | MVO 040 |
|---------------|------|-------------------|---------|---------|---------|---------|---------|---------|---------|
| Displacement | 50Hz | m ³ /h | 6.0 | 8.0 | 16 | 10 | 20 | 30 | 40 |
| | 60Hz | | 7.2 | 9.6 | 19 | 12 | 24 | 36 | 48 |
| Max. pressure | A | mbar | 2 | 0.5 | 2 | 0.5 | 2 | 0.5 | |
| | C | | 20 | | | | | | |
| Weight | 50Hz | kg | 12 | 18 | | 20 | | 34 | 38 |
| | 60Hz | | | | | | | | |
| Type | | | MVO 063 | MVO 100 | MVO 160 | MVO 250 | MVO 400 | MVO 630 | |
| Displacement | 50Hz | m ³ /h | 63 | 100 | 160 | 250 | 400 | 630 | |
| | 60Hz | | 76 | 120 | 190 | 300 | 480 | 760 | |
| Max. pressure | A | mbar | 0.5 | | | | | | |
| | C | | 20 | | | | | | |
| Weight | 50Hz | kg | 64 | 75 | 174 | 202 | 550 | 670 | |
| | 60Hz | | | | | | | | |

SVO series

Rotary Vane Vacuum Pumps
(Oil Circulated Type)

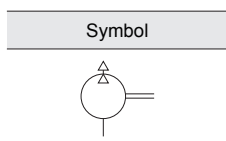
How to Order

SVO 060 - B C

① ② ③ ④



SVO 060



① Series

SVO : Oil circulated
(no exhaust filter)

② Displacement

060 : 60 l/min
100 : 100 l/min

③ Motor voltage

| Motor version(1~) | |
|-------------------|----------|
| A | 110/220V |
| B | 220V |
| C | 110V |
| L | 240V |

④ Motor hertz (Hz)

A : 60
B : 50
C : 50/60

⑤ Arrival pressure

Nil : Standard
B : 2mbar
C : 20mbar

Specifications

| Type | | | SVO060 | SVO100 |
|---------------|------|-------|--------|--------|
| Displacement | 50Hz | l/min | 50 | 85 |
| | 60Hz | | 60 | 100 |
| Max. pressure | | mbar | 2 | |
| Weight | 50Hz | kg | 12 | 13 |
| | 60Hz | | | |

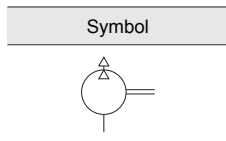
MOT series

VACUUM EQUIPMENT

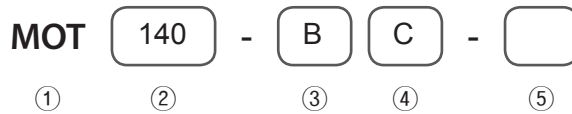
Rotary Vane Vacuum Pumps
(Oil Flooded Type)



MOT 85



How to Order



① Series

MOT : Oil flooded type

② Displacement

085 : 85 l/min
140 : 140 l/min

③ Motor voltage

| Motor version(1~) | |
|-------------------|----------|
| A | 110/220V |
| B | 220V |
| C | 110V |

④ Motor hertz (Hz)

A : 60

B : 50

C : 50/60

⑤ Arrival pressure

Nil : Standard

B : 2mbar

C : 20mbar

Specifications

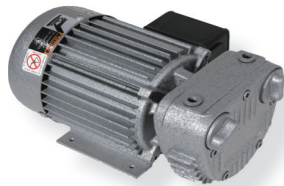
| Type | | | MOT085 | MOT140 |
|---------------|-------------------|-------|--------------------|--------|
| Displacement | 50Hz | l/min | 70 | 116 |
| | 60Hz | | 85 | 140 |
| Max. pressure | Gas Ballast Close | Torr | 5×10^{-3} | |
| | | | 5×10^{-2} | |
| Weight | 50Hz | kg | 15 | 16 |
| | 60Hz | | | |

SML series

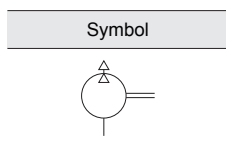
Rotary Vane Vacuum Pumps
(Dry Running Type)



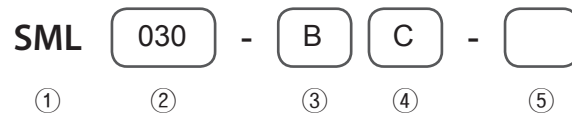
SML 030/060



SML 140



How to Order



① Series

SML : Dry running

② Displacement

030 : 30 l/min
60 : 60 l/min
140 : 140 l/min
280 : 280 l/min

③ Motor voltage

| Motor version(1~) | | Motor version(3~) | |
|-------------------|----------|-------------------|----------|
| A | 110/220V | D | 220/380V |
| B | 220V | E | 380V |
| C | 110V | F | 220V |
| L | 240V | G | 440V |
| | | H | 460V |
| | | J | 415V |
| | | K | 200V |

④ Motor hertz (Hz)

A : 60

B : 50

C : 50/60

⑤ Arrival pressure

Nil : Standard

B : 2mbar

C : 20mbar

Specifications

| Type | | | SML030 | SML060 | SML140 | SML280 |
|---------------|------|-------|---------|--------|--------|--------|
| Displacement | 50Hz | l/min | 25 | 50 | 120 | 235 |
| | 60Hz | | 30 | 60 | 140 | 280 |
| Max. pressure | 50Hz | mmHg | 550~600 | | 660 | |
| | 60Hz | | | | | |
| Max. pressure | | bar | 1.0 | | | |
| Weight | 50Hz | kg | 7.0 | | 25.5 | |
| | 60Hz | | | | | |

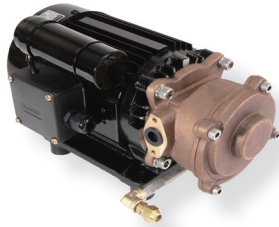
Vacuum
Equipment

DWV series

VACUUM EQUIPMENT

Liquid Ring Vacuum Pumps

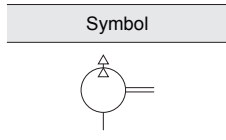
How to Order



DWV 400



DWV 10H



DWV ① 400 ② - B ③ C ④ - ⑤

① Series
DWV : Water sealed

② Displacement
400 : 400 l/min
10H : 1000 l/min

③ Motor voltage

| | Motor version(1~) | Motor version(3~) |
|---|-------------------|-------------------|
| A | 110/220V | D 220/380V |
| B | 220V | E 380V |
| C | 110V | F 220V |
| L | 240V | G 440V |
| | | H 460V |
| | | J 415V |
| | | K 200V |

④ Motor hertz (Hz)
A : 60
B : 50
C : 50/60

⑤ Arrival pressure
Nil : Standard
C : 20mbar

Specifications

| Type | | | DWV400 | DWV10H |
|---------------|------|-------|--------|--------|
| Displacement | 50Hz | l/min | 335 | 835 |
| | 60Hz | | 400 | 1000 |
| Max. pressure | | mmHg | 680 | 730 |
| Weight | 50Hz | kg | 20 | |
| | 60Hz | | | |

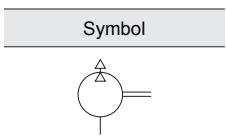
ENT series

Suction Pump For ENT Medical

How to Order



ENT 070



ENT ① 035 ② - B ③ C ④ - ⑤

① Series
ENT : Suction pump

② Displacement
035 : 35 l/min
070 : 70 l/min

③ Motor voltage

| | Motor version(1~) |
|---|-------------------|
| A | 110/220V |
| B | 220V |
| C | 110V |

④ Motor hertz (Hz)
A : 60
B : 50
C : 50/60

⑤ Arrival pressure
Nil : Standard
B : 2mbar
C : 20mbar

Specifications

| Type | | | ENT035 | ENT070 |
|---------------|------|-------|--------|--------|
| Displacement | 50Hz | l/min | 30 | 60 |
| | 60Hz | | 35 | 70 |
| Max. pressure | 50Hz | mmHg | 700 | |
| | 60Hz | | | |
| Weight | 50Hz | kg | 12.5 | 13.5 |
| | 60Hz | | | |

DEN400, SYSDEN400 series

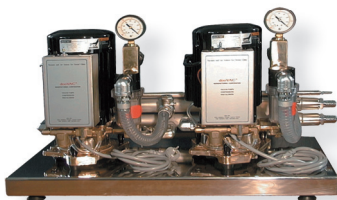
VACUUM EQUIPMENT

Suction Pump For Dental Medical

How to Order



DEN 400



SYSDEN 400

Symbol



① Series

DEN : Sution pump - Single
SYSDEN : Sution pump - Dual

③ Motor voltage

| Motor version(1~) | |
|-------------------|----------|
| A | 110/220V |
| B | 220V |
| C | 110V |

④ Motor hertz (Hz)

A : 60

B : 50

C : 50/60

② Displacement

400 : 400 l/min

⑤ Arrival pressure

Nil : Standard

B : 2mbar

C : 20mbar

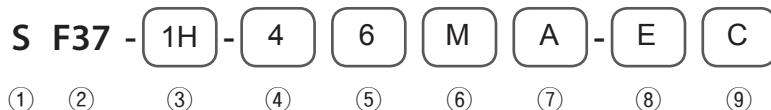
Specifications

| Type | | | DEN400 | SYSDEN400 |
|---------------|------|-------|--------|-----------|
| Displacement | 50Hz | l/min | 335 | 670 |
| | 60Hz | | 400 | 800 |
| Max. pressure | | mmHg | 680 | |

S series

Vacuum Tank Systems

How to Order



Simplex



Duplex

① Series

S : Vacuum tank system

② Displacement

| | | | |
|-----|---------|-----|---------|
| A18 | SML-030 | F30 | MVO-008 |
| A19 | SML-060 | F27 | MVO-016 |
| A20 | SML-140 | F31 | MVO-010 |
| A24 | SML-280 | F32 | MVO-020 |
| C20 | ENT-035 | F34 | MVO-030 |
| C21 | ENT-070 | F35 | MVO-040 |
| D25 | DEN-040 | F36 | MVO-063 |
| E26 | DWV-400 | F37 | MVO-100 |
| E28 | DWV-10H | F39 | MVO-160 |
| B15 | SVO-060 | F40 | MVO-250 |
| B16 | SVO-100 | F41 | MVO-400 |
| F29 | MVO-006 | F42 | MVO-630 |

③ Series

1H : Simplex

2H : Duplex

④ Tank size

1 : 3 Liter

2 : 30 Liter

3 : 70 Liter

4 : 150 Liter

5 : 200 Liter

6 : 300 Liter

⑤ Tank type

1~4 : Cylinder courage

2 : Acryl type
(The inside is visible)

6~9 : Rectangularity courage

⑥ Operation

| | Control pannel | Vacuum & pressure switch |
|---|----------------|--------------------------|
| M | No | No |
| S | No | Yes |
| E | Yes | No |
| A | Yes | Yes |

⑦ Valve application

M : Manual ON/OFF(Ball valve)

A : Automatic ON/OFF
(Sol. vlave)

C : Manual drain cock

D : Automatic drain cock

⑧ Motor voltage

| Motor version(1~) | | Motor version(3~) | |
|-------------------|----------|-------------------|----------|
| A | 110/220V | D | 220/380V |
| B | 220V | E | 380V |
| C | 110V | F | 220V |
| L | 240V | G | 440V |
| | | H | 460V |
| | | J | 415V |
| | | K | 200V |

⑨ Motor hertz (Hz)

A : 60

B : 50

C : 50/60

Specifications

| Model | | m ³ /hr | Tank (Liter) | Weight (kg) |
|---------|--------------|--------------------|--------------|-------------|
| Simplex | SF34-1H-46AM | 36 | 150 | 101 |
| | SF35-1H-46AM | 48 | | 105 |
| | SF36-1H-66AM | 76 | 300 | 165 |
| | SF37-1H-66AM | 120 | | 176 |
| Duplex | SF34-2H-56AM | 72 | 200 | 157 |
| | SF35-2H-56AM | 96 | | 175 |
| | SF36-2H-66AM | 154 | 300 | 223 |
| | SF37-2H-66AM | 240 | | 245 |

Vacuum Equipment